

RNAV (GPS) RWY 34

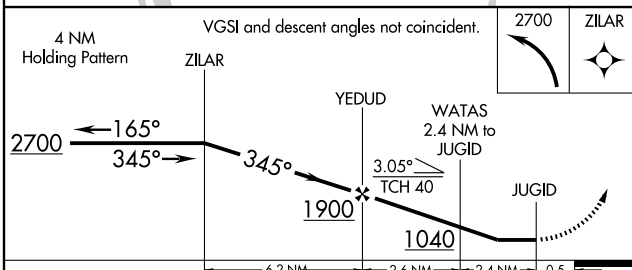
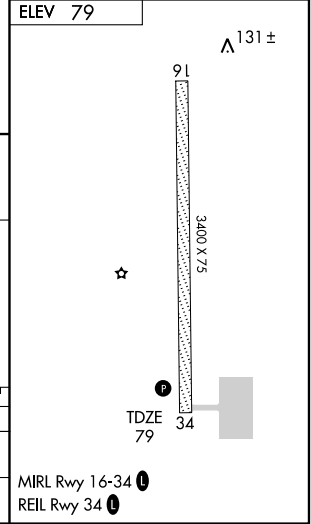
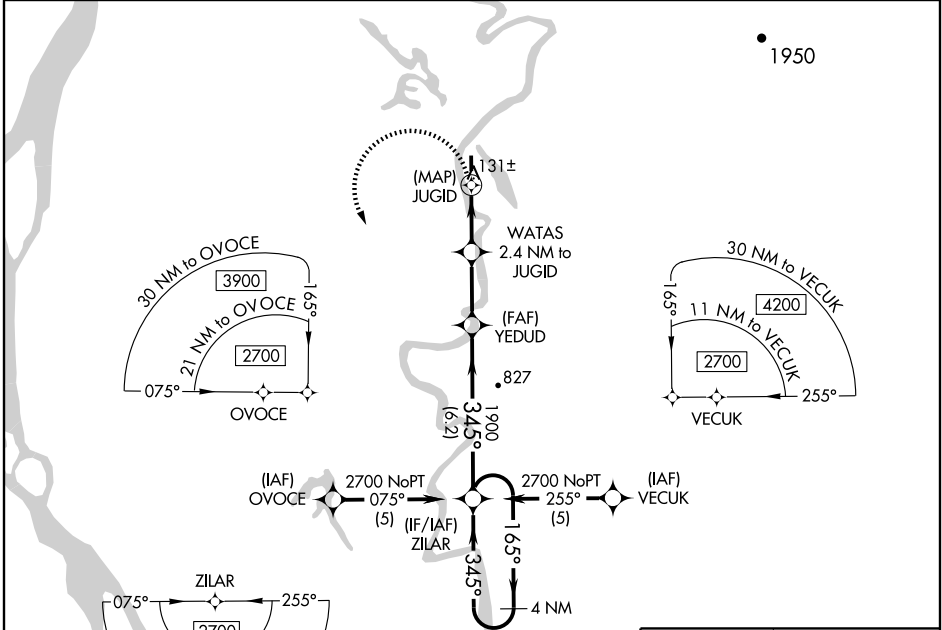
SHAGELUK (SHX)

APP CRS 345°	Rwy Idg 3400
	TDZE 79
	Apt Elev 79

NA DME/DME RNP- 0.3 NA.
 Visibility reduction by helicopters NA.
 Use Anvik altimeter setting; when not received, procedure NA.

MISSED APPROACH: Climbing left turn to 2700 direct ZILAR and hold.

ANVIK AWOS 133.550	ANCHORAGE CENTER 135.7 335.5	UNICOM 122.8 (CTAF)
------------------------------	--	-------------------------------



CATEGORY	A	B	C	D
LNVA MDA	480-1	401 (500-1)		NA
CIRCLING	520-1 441 (500-1)	540-1 461 (500-1)		NA

AK, 22 OCT 2009 to 17 DEC 2009

AK, 22 OCT 2009 to 17 DEC 2009