

RNAV (GPS) RWY 12

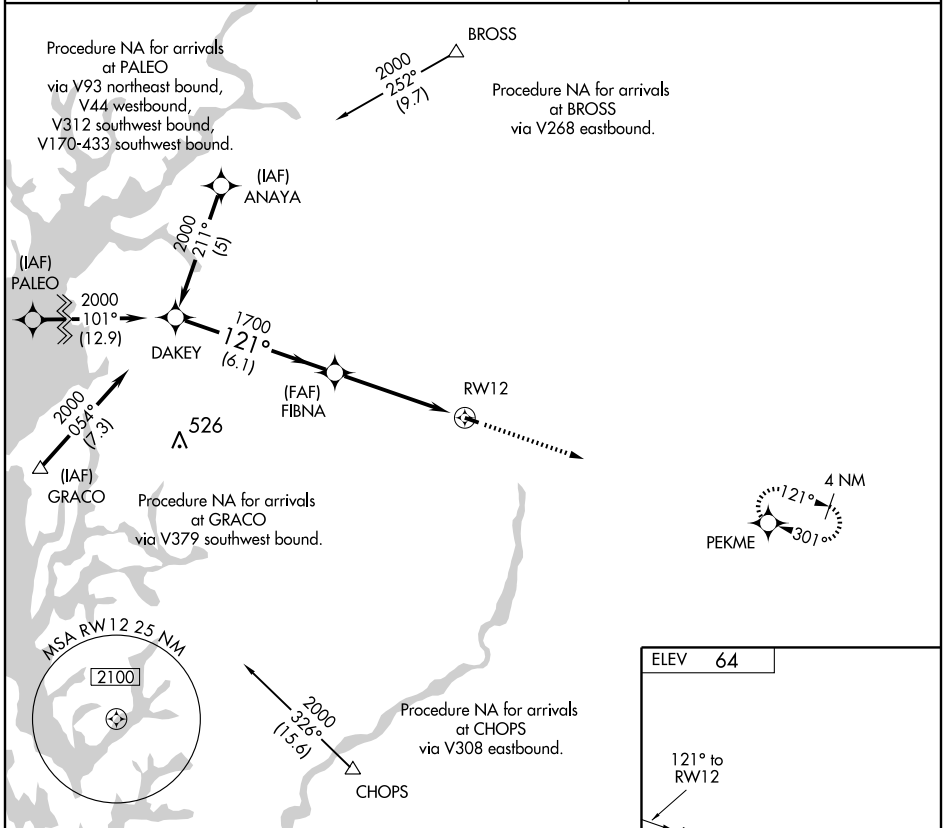
RIDGELY AIRPARK (RJD)

APP CRS 121°	Rwy Idg 3214
	TDZE 64
	Apt Elev 64

▼ If local altimeter setting not received, procedure NA.
▲ NA Procedure NA at night.
 Procedure NA at night.
 GPS or RNP-0.3 required. DME/DME RNP-0.3 NA.

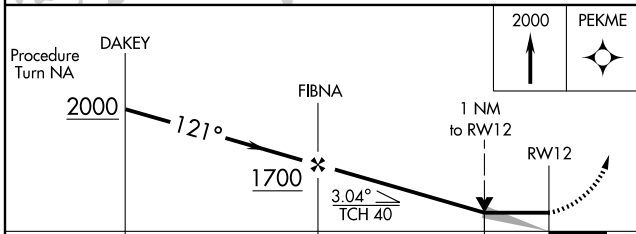
MISSED APPROACH: Climb to 2000 direct PEKME WP and hold.

AWOS-3 120.225	POTOMAC APP CON 124.55 317.425	UNICOM 122.8 (CTAF) ①
--------------------------	--	---------------------------------



NE-3, 22 OCT 2009 to 19 NOV 2009

NE-3, 22 OCT 2009 to 19 NOV 2009



ELEV	64
------	----

TDZE 64

LIRL Rwy 12-30 ①
REIL Rwy 12 and 30 ①

Procedure Turn NA	DAKEY	FIBNA	RWY 12
	2000	1700	
	6.1 NM	3.9 NM	1 NM
CATEGORY	A	B	C
LNAV MDA	440-1	376 (400-1)	NA
CIRCLING	480-1	520-1	NA
	416 (500-1)	456 (500-1)	