

RNAV (GPS) RWY 17

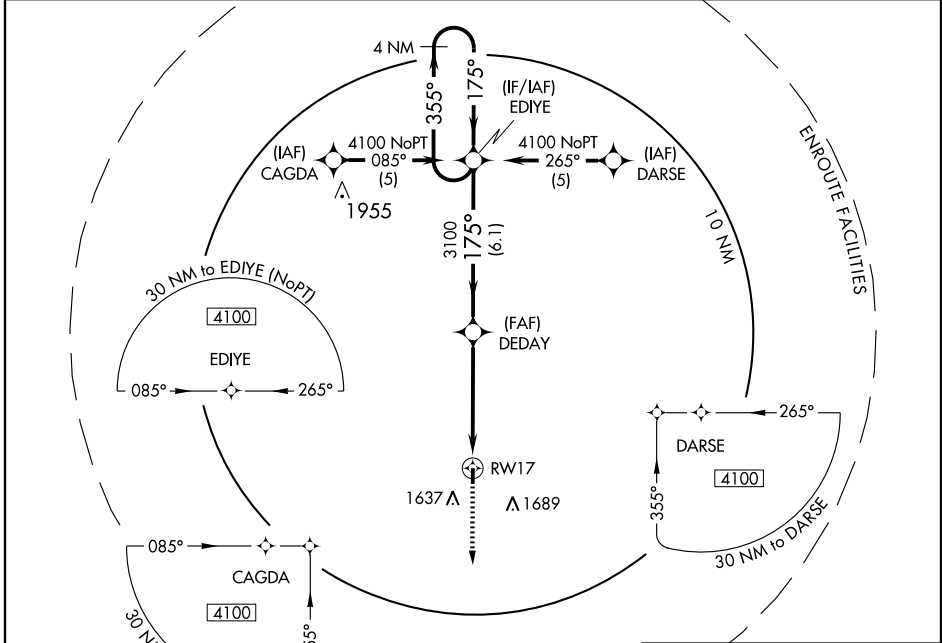
MOUNDRIDGE MUNI (47K)

APP CRS 175°	Rwy Idg 3405
	TDZE 1489
	Apt Elev 1489

NA Use McPherson altimeter setting.
GPS or RNP-0.3 required. DME/DME RNP-0.3 NA.
Procedure NA at night.

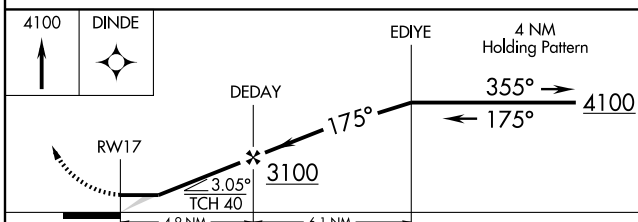
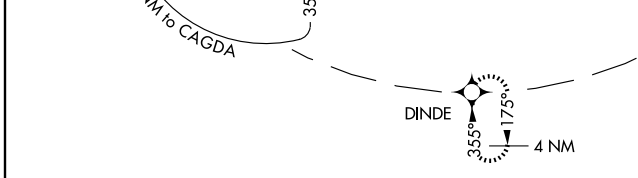
MISSED APPROACH: Climb to 4100 direct
DINDE WP and hold.

McPHERSON AWOS-3 119.025	WICHITA APP CON 125.5 306.2	CTAF 122.9
------------------------------------	---------------------------------------	----------------------



NC-2, 22 OCT 2009 to 19 NOV 2009

NC-2, 22 OCT 2009 to 19 NOV 2009



CATEGORY	A	B	C	D
LNVA MDA	1940-1	451 (500-1)	NA	
CIRCLING	2020-1	531 (600-1)	NA	

ELEV 1489

175° to RWY 17

TDZE 1489

3405 X 50

1543 ☆ 35

LIRL Rwy 17-35

The diagram shows the 3405 x 50 runway and the 1543 ft obstacle. The runway is oriented 175° to RWY 17. The TDZE is 1489 ft. The obstacle is 1543 ft high and is located 35 ft from the runway edge.