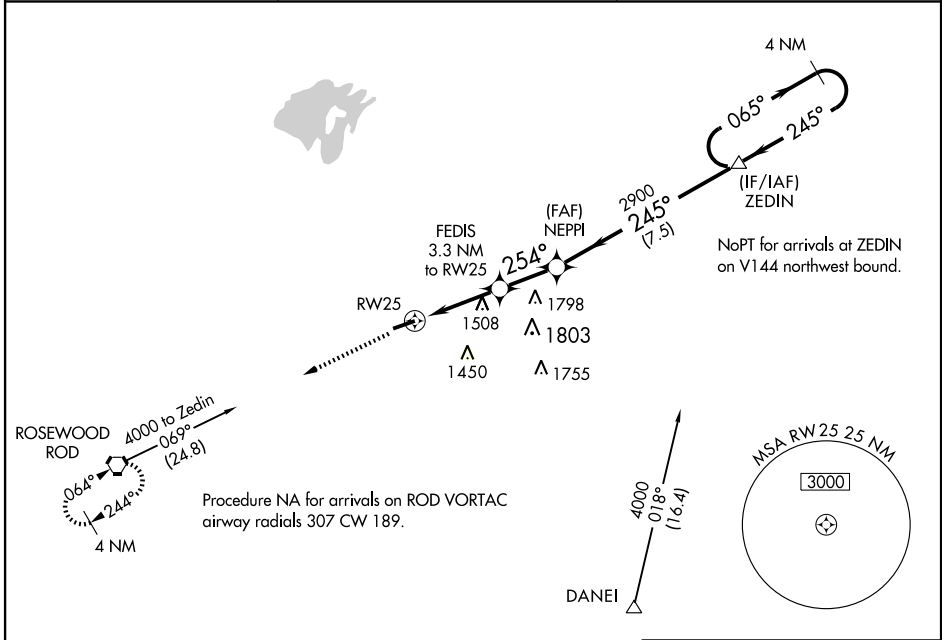


# RNAV (GPS) RWY 25

BELLEFONTAINE RGNL (E.D.J)

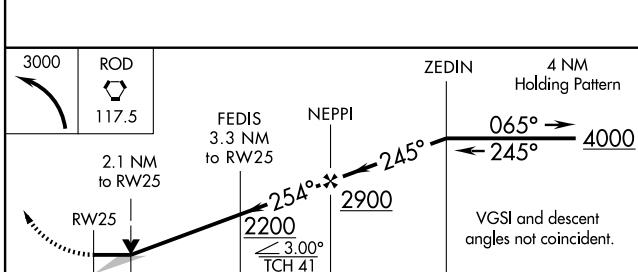
APP CRS	Rwy Idg	<b>4999</b>
<b>254°</b>	TDZE	<b>1123</b>
	Apt Elev	<b>1123</b>

<p><b>▽</b> Obtain local altimeter on CTAF; when not received use James M. Cox Dayton Intl altimeter setting. VDP NA with James M. Cox Intl altimeter setting. GPS or RNP-0.3 required. DME/DME RNP-0.3 NA.</p> <p><b>△</b> NA</p>	<p>MISSED APPROACH: Climbing left turn to 3000 direct ROD VORTAC and hold.</p>	
<p>AWOS-3 <b>118.075</b></p>	<p>DAYTON APP CON <b>118.425 294.5</b></p>	<p>UNICOM <b>122.8 (CTAF) 0</b></p>



EC-2, 22 OCT 2009 to 19 NOV 2009

EC-2, 22 OCT 2009 to 19 NOV 2009



	ELEV 1123			
	ZEDIN 4 NM Holding Pattern			
	RWY 25 2.1 NM to RWY 25			
	FEDIS 3.3 NM to RWY 25			
	NEPPI 2900			
	2200			
	3.00° TCH 41			
	1.2 NM 2.2 NM 7.5 NM			
CATEGORY	A	B	C	D
LNAV MDA	1820-1	697 (700-1)	1820-2	1820-2¼
			697 (700-2)	697 (700-2¼)
CIRCLING	1820-1	697 (700-1)	1820-2	1820-2¼
			697 (700-2)	697 (700-2¼)
JAMES M. COX DAYTON INTL. ALTIMETER SETTING MINIMUMS				
LNAV MDA	1920-1	1920-1¼	1920-2¼	1920-2½
	797 (800-1)	797 (800-1¼)	797 (800-2¼)	797 (800-2½)
CIRCLING	1920-1	1920-1¼	1920-2¼	1920-2½
	797 (800-1)	797 (800-1¼)	797 (800-2¼)	797 (800-2½)

