

# RNAV (GPS) RWY 20

POTOSI/ WASHINGTON COUNTY (8WC)

APP CRS <b>199°</b>	Rwy Idg <b>4000</b>
	TDZE <b>956</b>
	Apt Elev <b>959</b>

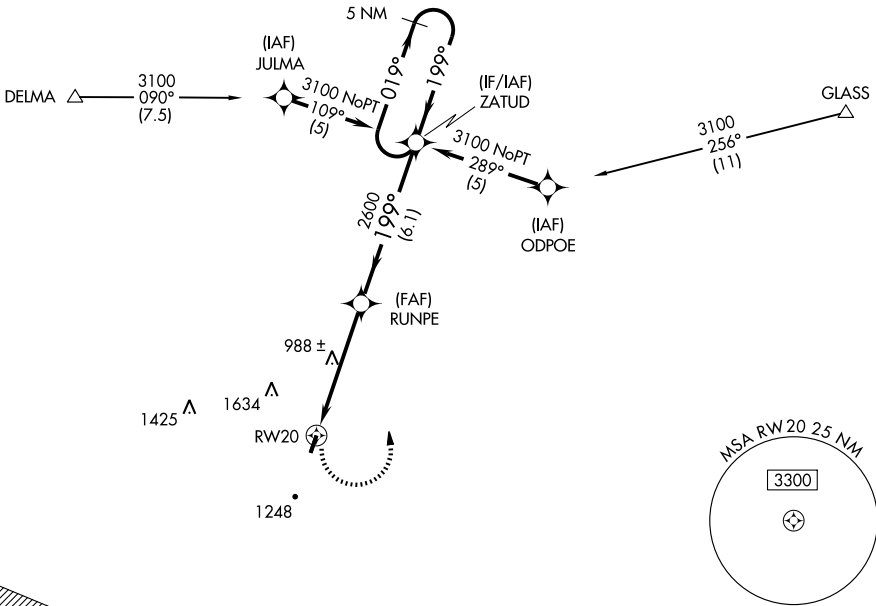
**NA** DME/DME RNP-0.3 NA. Circling NA west of Rwy 2-20.  
Use Farmington altimeter setting, if not received, use Lambert-St. Louis Intl altimeter setting and increase all MDAs 140 feet.

**MISSED APPROACH:** Climbing left turn to 3100 direct ZATUD and hold.

KANSAS CITY CENTER  
**128.35 284.67**

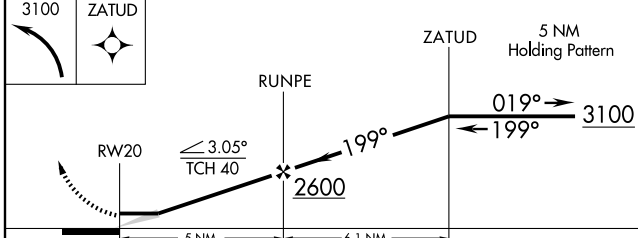
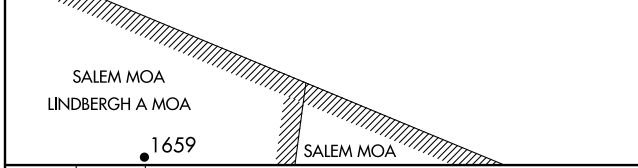
UNICOM  
**123.0 (CTAF) 0**

Procedure NA for arrivals at DELMA via V238 southwest bound.



NC-3, 22 OCT 2009 to 19 NOV 2009

NC-3, 22 OCT 2009 to 19 NOV 2009



CATEGORY	A	B	C	D
RNAV MDA	1360-1	404 (500-1)	1360-1¼ 404 (500-1¼)	NA
CIRCLING	1560-1 601 (700-1)	1580-1 621 (700-1)	1620-1¾ 661 (700-1¾)	NA

