

# NDB RWY 17

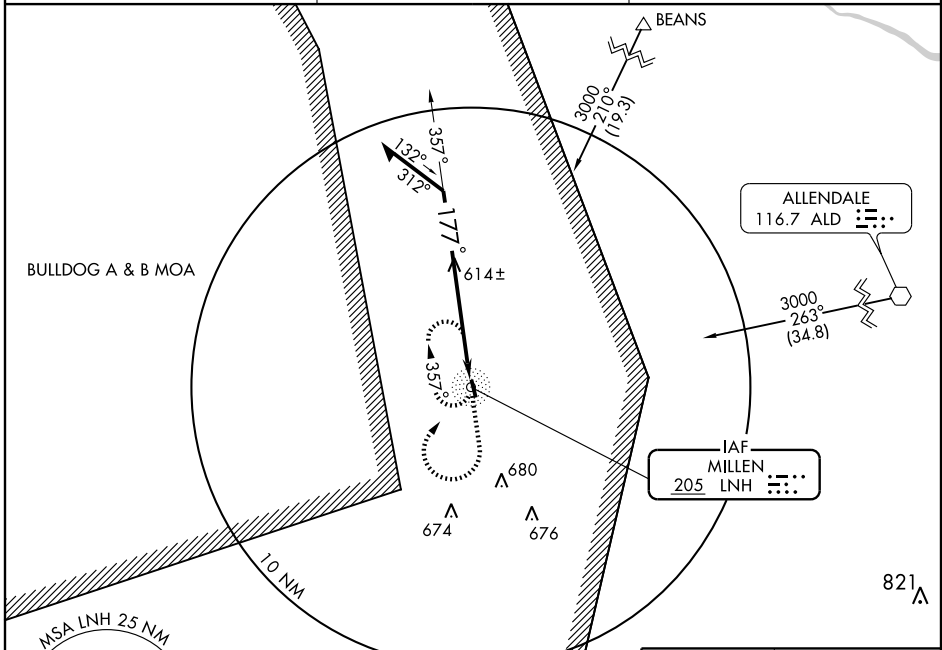
MILLEN (2J5)

NDB LNH	APP CRS	Rwy Idg	<b>4000</b>
<b>205</b>	<b>177°</b>	TDZE	<b>237</b>
		Apt Elev	<b>237</b>

**▽** Use Augusta Rgnl at Bush Field altimeter setting. **MISSED APPROACH:** Climb to 1500 then climbing right turn to 3000 direct LNH NDB and hold.

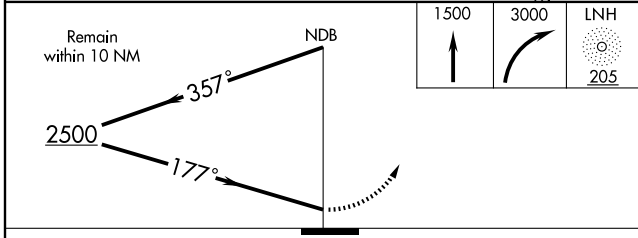
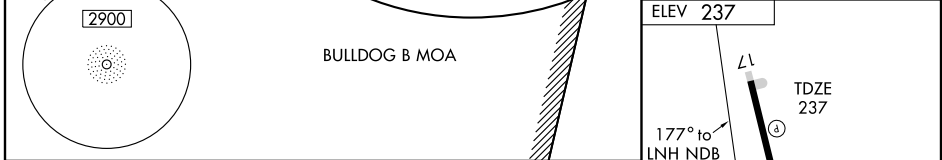
**△NA** Circling NA E of Rwy17-35.

AUGUSTA ASOS <b>132.75</b>	AUGUSTA APP CON <b>126.8 270.3</b>	CTAF <b>122.90</b>
-------------------------------	---------------------------------------	-----------------------



SE-4, 22 OCT 2009 to 19 NOV 2009

SE-4, 22 OCT 2009 to 19 NOV 2009



CATEGORY	A	B	C	D	MIRL Rwy 17-35
S-17	1100-1 863 (900-1)	1100-1¼ 863 (900-1¼)	1100-2½ 863 (900-2½)	1100-2¾ 863 (900-2¾)	35
CIRCLING	1100-1 863 (900-1)	1100-1¼ 863 (900-1¼)	1100-2½ 863 (900-2½)	1100-2¾ 863 (900-2¾)	

Knots	60	90	120	150	180
Min:Sec					