

BERRIEN SPRINGS, MICHIGAN

AL-10238 (FAA)

**VOR-A**

BERRIEN SPRINGS / ANDREWS UNIVERSITY AIRPARK (C20)

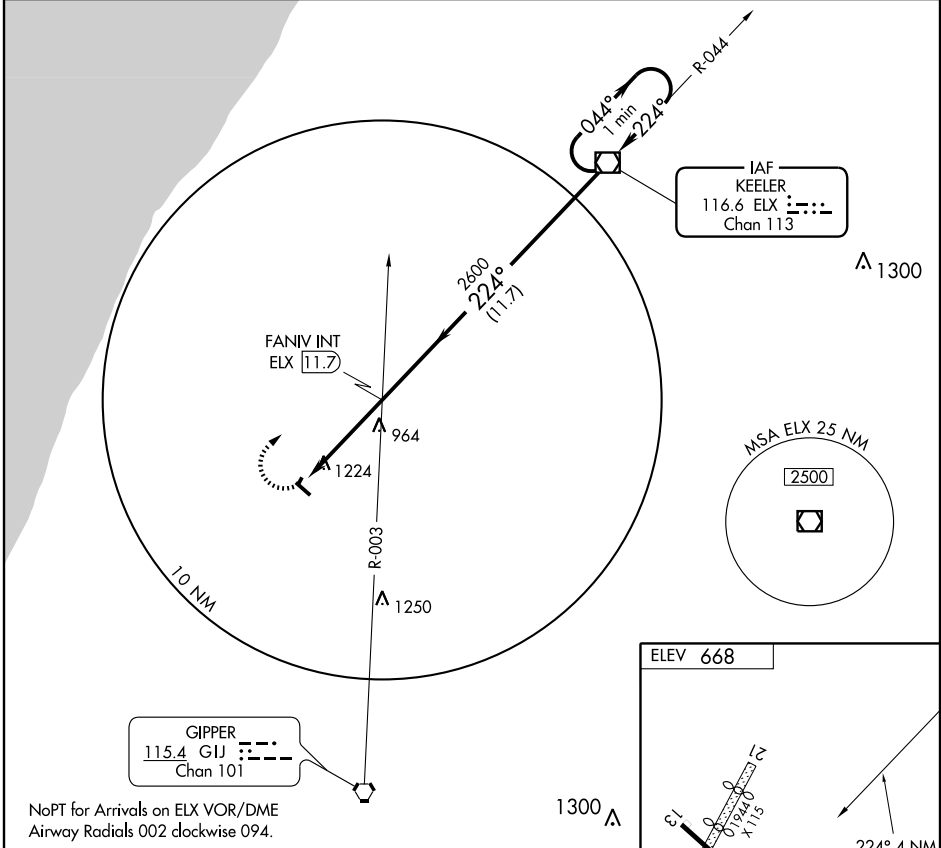
VOR/DME ELX <b>116.6</b> Chan <b>113</b>	APP CRS <b>224°</b>	Rwy Idg TDZE Apt Elev <b>N/A</b> <b>N/A</b> <b>668</b>
--	------------------------	---

**▽** Use Benton Harbor altimeter setting.  
**▲** NA Procedure NA at night.

**MISSED APPROACH:** Climbing right turn to 2600 direct ELX VOR/DME and hold.

**SOUTH BEND APP CON \***  
**118.55 257.8**

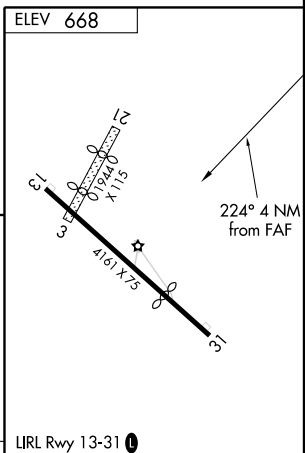
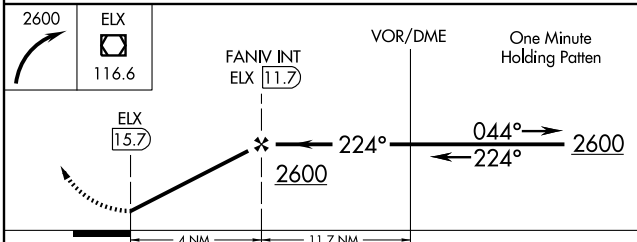
**UNICOM**  
**122.7 (CTAF) 0**



**GIPPER**  
115.4 GJ  
Chan 101

**IAF**  
**KEELER**  
116.6 ELX  
Chan 113

NoPT for Arrivals on ELX VOR/DME  
Airway Radials 002 clockwise 094.



CATEGORY	A	B	C	D
CIRCLING	1620-1¼ 952 (1000-1¼)	1620-1½ 952 (1000-1½)	NA	

FAF to MAP 4 NM					
Knots	60	90	120	150	180
Min:Sec	4:00	2:40	2:00	1:36	1:20

BERRIEN SPRINGS, MICHIGAN  
Orig 09295

BERRIEN SPRINGS / ANDREWS UNIVERSITY AIRPARK (C20)  
41°57'N - 86°22'W

**VOR-A**

EC-1, 22 OCT 2009 to 19 NOV 2009

EC-1, 22 OCT 2009 to 19 NOV 2009