

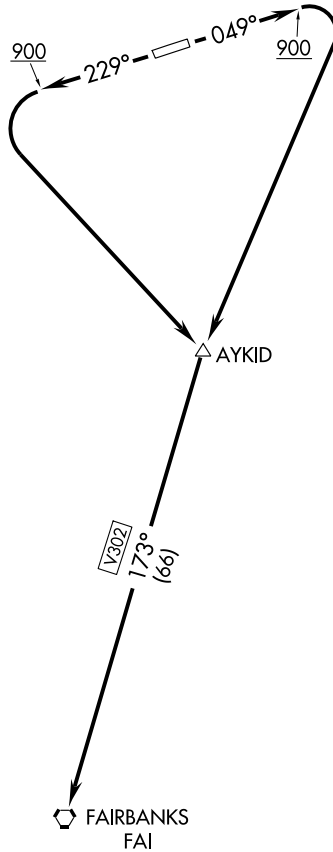
(FAI1.FAI) 09239

SL-10233 (FAA)

BEAVER (WBQ) (PAWB)  
BEAVER, ALASKA

# FAIRBANKS ONE DEPARTURE (RNAV)

FORT YUKON AWOS-3  
125.8  
FAIRBANKS RADIO  
122.1  
CTAF  
122.9



NOTE: RNAV 1.  
NOTE: GPS required.

### TAKE-OFF MINIMUMS

Rwy 5, 23: Standard.

### TAKE-OFF OBSTACLE NOTES

- Rwy 5: Multiple trees beginning 229' from DER, 262' right of centerline, up to 60' AGL/419' MSL.  
Multiple trees beginning 1263' from DER, 373' right of centerline, up to 60' AGL/419' MSL.  
Vehicle on road 392' from DER, 9' right of centerline, 10' AGL/369' MSL.
- Rwy 23: Multiple trees beginning 1259' from DER, 374' right of centerline, up to 60' AGL/419' MSL.  
Multiple trees beginning 1277' from DER, 366' left of centerline, up to 60' AGL/419' MSL.

NOTE: Chart not to scale.



### DEPARTURE ROUTE DESCRIPTION

TAKE-OFF RUNWAY 5: Climb heading 049° to 900', then right turn direct AYKID, then via depicted route, Thence ....

TAKE-OFF RUNWAY 23: Climb heading 229° to 900', then left turn direct AYKID, then via depicted route, Thence ....

.... maintain 7000 or as assigned by ATC.

AK, 22 OCT 2009 to 17 DEC 2009

AK, 22 OCT 2009 to 17 DEC 2009

FAIRBANKS ONE DEPARTURE (RNAV)  
(FAI1.FAI) 09239

BEAVER, ALASKA  
BEAVER (WBQ) (PAWB)