

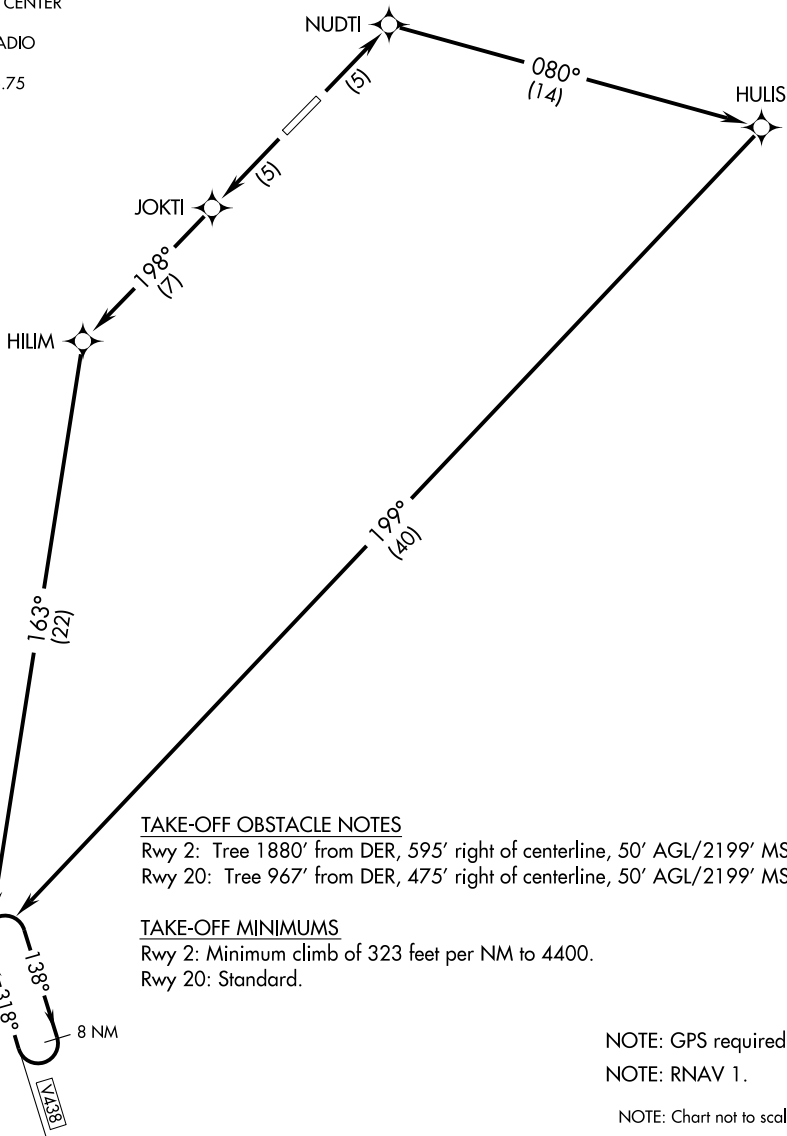
(TUVVO1.TUVVO) 09239

SL-10232 (FAA)

ARCTIC VILLAGE (ARC)(PARC)
ARCTIC VILLAGE, ALASKA

TUVVO ONE DEPARTURE (RNAV) (OBSTACLE)

ANCHORAGE CENTER
135.0 225.4
FAIRBANKS RADIO
122.1
AWOS-3 135.75



AK, 22 OCT 2009 to 17 DEC 2009

AK, 22 OCT 2009 to 17 DEC 2009

TAKE-OFF OBSTACLE NOTES

Rwy 2: Tree 1880' from DER, 595' right of centerline, 50' AGL/2199' MSL.
Rwy 20: Tree 967' from DER, 475' right of centerline, 50' AGL/2199' MSL.

TAKE-OFF MINIMUMS

Rwy 2: Minimum climb of 323 feet per NM to 4400.
Rwy 20: Standard.

NOTE: GPS required.
NOTE: RNAV 1.
NOTE: Chart not to scale.



DEPARTURE ROUTE DESCRIPTION

TAKE-OFF RUNWAY 2: Climb to 10000 direct NUDTI, and via 080° track to HULIS, and right turn via 199° track to TUVVO, thence. . . .

TAKE-OFF RUNWAY 20: Climb to 10000 direct JOKTI, then via depicted route to TUVVO, thence. . . .

. . . . climb in holding (if required) at TUVVO before proceeding via assigned route and altitude.

TUVVO ONE DEPARTURE (RNAV) (OBSTACLE)

(TUVVO1.TUVVO) 09239

ARCTIC VILLAGE, ALASKA
ARCTIC VILLAGE (ARC)(PARC)