

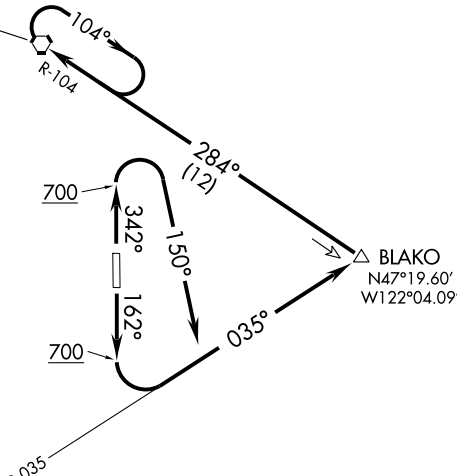
SEATTLE CLNC DEL
128.0
SEATTLE DEP CON
123.85

TAKE-OFF MINIMUMS

RWY 16: Standard with minimum climb of 266' per NM to 1200 or 1200-2½ for climb in visual conditions, do not exceed 180 KIAS until passing BLAKO.

RWY 34: Standard with minimum climb of 300' per NM to 900 or 1200-2½ for climb in visual conditions, do not exceed 180 KIAS until passing BLAKO.

SEATTLE
116.8 SEA
Chan 115
N47°26.12' W122°18.58'
L-1, H-1



McCHORD
109.6 TCM
Chan 33

TAKE-OFF OBSTACLE NOTES:

RWY 16: AAO 3.2 NM from DER, 3643' left of centerline 200' AGL/724' MSL.

RWY 34: AAO 3.2 NM from DER, 5520' right of centerline 200' AGL/639' MSL. Powerline 1804' from DER, on centerline, 80' AGL/122' MSL.

NOTE: Chart not to scale.

DEPARTURE ROUTE DESCRIPTION

TAKE-OFF RUNWAY 16: Climb heading 162° to 700, then climbing left turn to 3000 via the TCM R-035 to BLAKO INT then left turn via the SEA R-104 to SEA VORTAC; or climb in visual conditions east of RWY 16/34 to cross Auburn Muni southbound at or above 1200', then climb to 3000 via heading 150° and TCM R-035 to BLAKO INT then left turn via the SEA R-104 to SEA VORTAC. Do not exceed 180 KIAS until passing BLAKO. Thence....

TAKE-OFF RUNWAY 34: Climb heading 342° to 700, then climbing right turn to 3000 via heading 150° to TCM R-035 to BLAKO INT then left turn via the SEA R-104 to SEA VORTAC; or climb in visual conditions east of RWY 16/34 to cross Auburn Muni southbound at or above 1200', then climb to 3000 via heading 150° and TCM R-035 to BLAKO INT then left turn via the SEA R-104 to SEA VORTAC. Do not exceed 180 KIAS until passing BLAKO. Thence....

...hold E SEA VORTAC, RT, 284° inbound; when authorized by ATC, climb-in-hold to 5000, or as assigned before proceeding on course.

NW-1, 22 OCT 2009 to 19 NOV 2009

NW-1, 22 OCT 2009 to 19 NOV 2009