

# RNAV (GPS) RWY 31

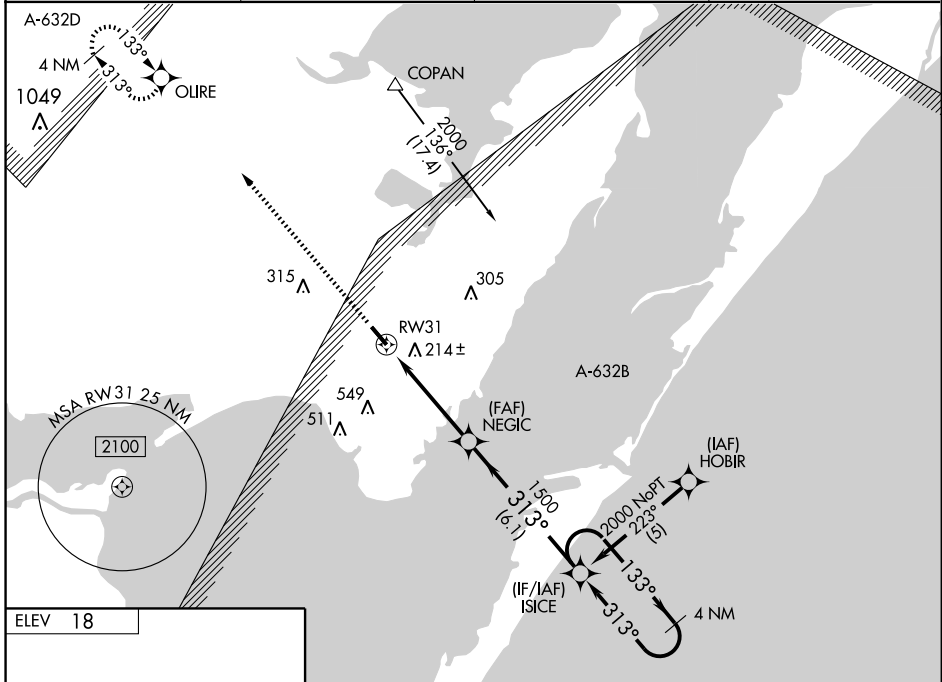
INGLESIDE/ T P MC CAMPBELL (TFP)

WAAS Ch <b>82601</b> <b>W31A</b>	APP CRS <b>313°</b>	Rwy Idg <b>5000</b> TDZE <b>18</b> Apt Elev <b>18</b>
--	------------------------	---

**⚠** BARO-VNAV NA when using Mustang Beach altimeter setting. For uncompensated BARO-VNAV systems, LNAV/VNAV NA below -15°C (5°F) or above 48°C (118°F).  
**⚠** When local altimeter setting not received, use Mustang Beach altimeter setting and increase LPV DA to 291 feet; LNAV/VNAV DA to 533 feet; and all MDAs 40 feet; increase LNAV Cat C visibility ¼ mile. VDP NA when using Mustang Beach altimeter setting. DME/DME RNP-0.3 NA.

MISSED APPROACH:  
Climb to 2100 direct  
OLIRE and hold.

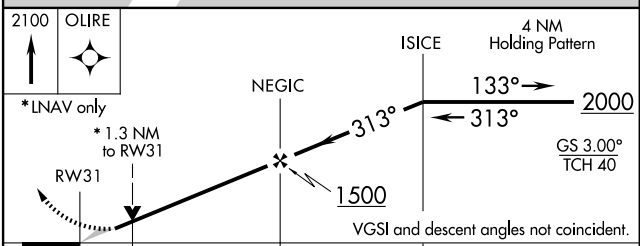
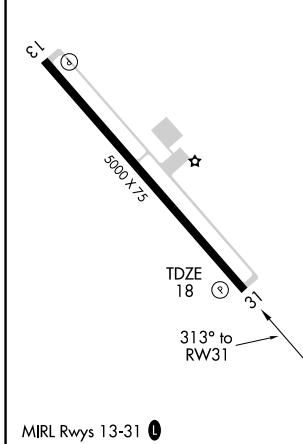
AWOS-3 <b>118.775</b>	CORPUS APP CON <b>120.9 348.725</b>	UNICOM <b>122.7</b> (CTAF)	<b>123.0</b> <b>⓪</b>
--------------------------	--	-------------------------------	-----------------------



SC-3, 22 OCT 2009 to 19 NOV 2009

SC-3, 22 OCT 2009 to 19 NOV 2009

ELEV 18
---------



CATEGORY	A	B	C	D
LPV DA	268-1		250 (300-1)	
LNAV/VNAV DA	510-1¾		492 (500-1¾)	
LNAV MDA	480-1	462 (500-1)	480-1½ 462 (500-1½)	480-1½ 462 (500-1½)
CIRCLING	520-1	502 (600-1)	520-1½ 502 (600-1½)	580-2 562 (600-2)