

RNAV (GPS) RWY 34

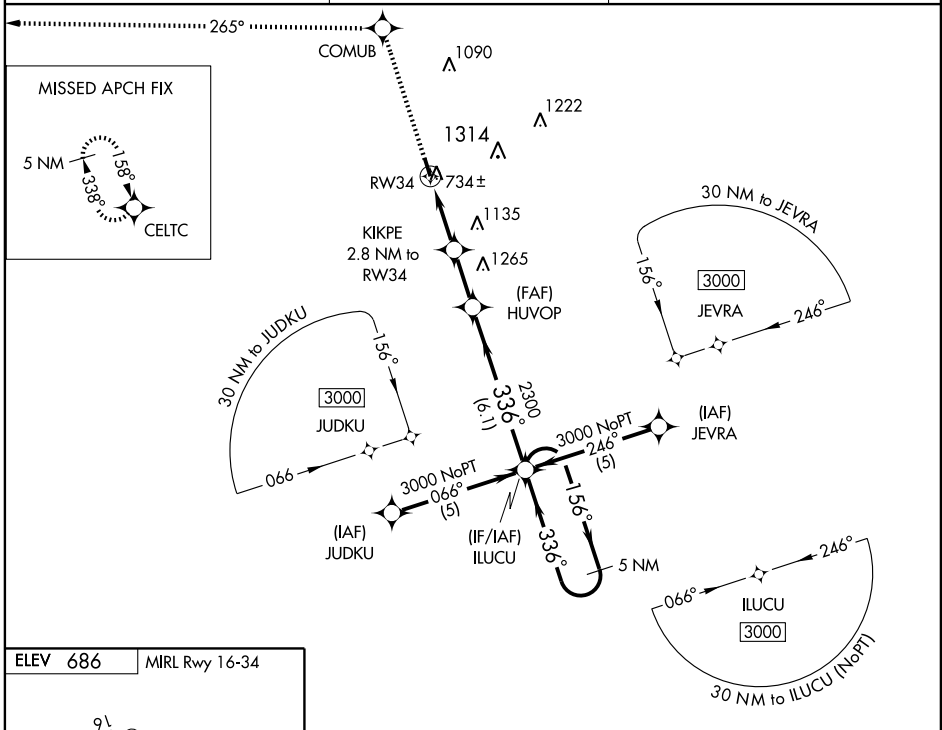
HILLSBORO MUNI (INJ)

WAAS CH 65908 W34A	APP CRS 336	Rwy Idg 3998 TDZE 684 Apt Elev 686
--	-----------------------	---

▼ Baro-VNAV NA when using Cleburne Muni altimeter setting. DME/DME RNP-0.3 NA. For uncompensated Baro-VNAV systems, LNAV/VNAV NA below -16°C (4°F) or above 54°C (130°F). Visibility reduction by helicopters NA. When local altimeter setting not received use Cleburne Muni altimeter setting and increase all DA/MDA 80 feet, increase LPV and LNAV/VNAV visibility ¼ mile all Cats.

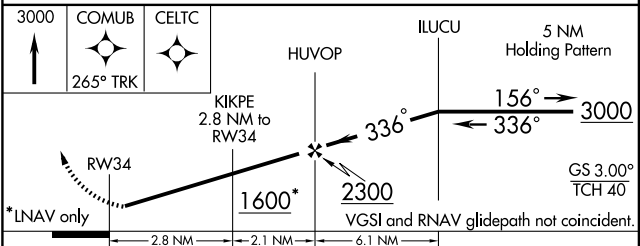
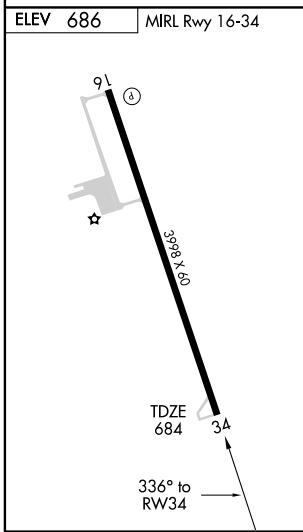
MISSED APPROACH:
Climb to 3000 direct COMUB and via 265° track to CELTC and hold.

AWOS-3 118.725	WACO APP CON 135.2 352.0	CTAF 122.9
--------------------------	------------------------------------	----------------------



SC-2, 22 OCT 2009 to 19 NOV 2009

SC-2, 22 OCT 2009 to 19 NOV 2009



CATEGORY	A	B	C	D
LPV DA	934-1	250 (300-1)		NA
LNAV/VNAV DA	1004-1¼	320 (400-1¼)		NA
LNAV MDA	1320-1	636 (700-1)		NA
CIRCLING	1320-1	634 (700-1)		NA