

RNAV (GPS) RWY 32

SOUTH TEXAS INTL AT EDINBURG (E.B.G)

WAAS CH 70701 W32A	APP CRS 318°	Rwy Idg TDZE 73 Apt Elev 75	5000
--	------------------------	---	-------------

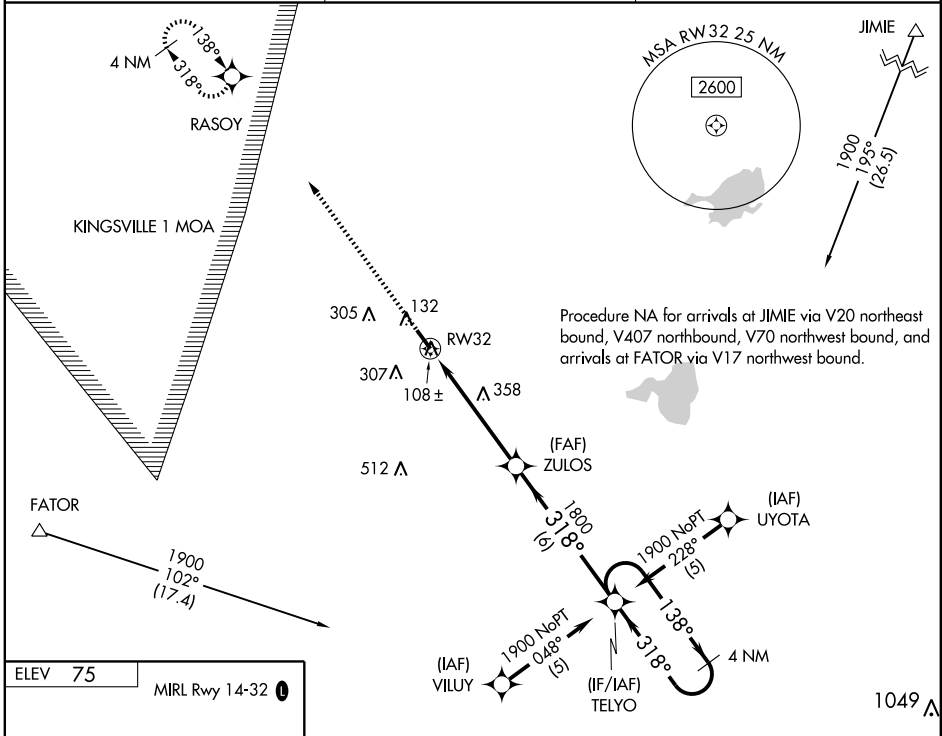
▼ Visibility reduction by helicopters NA. DME/DME RNP-0.3 NA.
For uncompensated BARO-VNAV systems, LNAV/VNAV NA
below -15°C (5°F) or above 48°C (120°F).

MISSED APPROACH: Climb to 1900
direct RASOY and hold.

AWOS-3
118.025

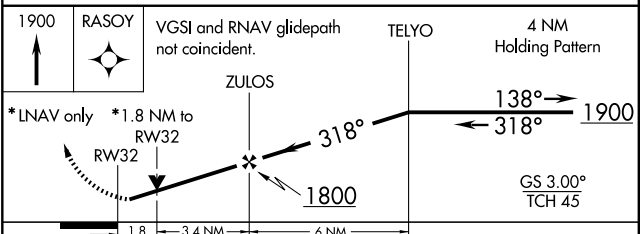
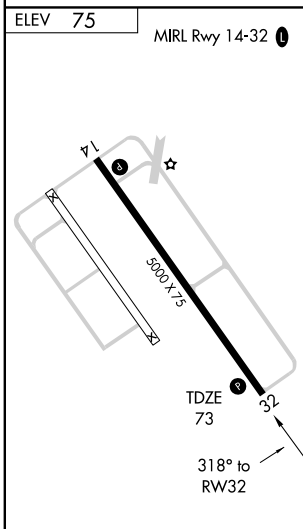
CORPUS APP CON
121.0 377.2

UNICOM
122.8 (CTAF) 0



SC-3, 22 OCT 2009 to 19 NOV 2009

SC-3, 22 OCT 2009 to 19 NOV 2009



CATEGORY	A	B	C	D
LPV DA		323-3/4	250 (300-3/4)	
LNAV/ VNAV DA		361-1	288 (300-1)	
LNAV MDA	660-1	587 (600-1)	660-1 1/2 587 (600-1 1/2)	660-1 3/4 587 (600-1 3/4)
CIRCLING	660-1	585 (600-1)	660-1 1/2 585 (600-1 1/2)	660-2 585 (600-2)