

RNAV (GPS) RWY 14

SOUTH TEXAS INTL AT EDINBURG (E.B.G)

WAAS CH 77901 W14A	APP CRS 138°	Rwy Idg TDZE 75 Apt Elev 75	5000
--	------------------------	---	-------------

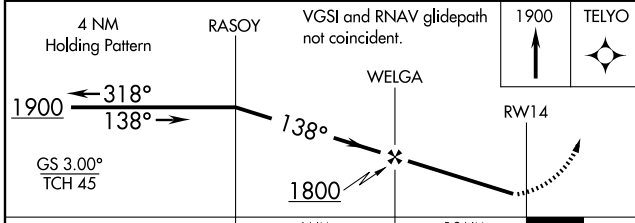
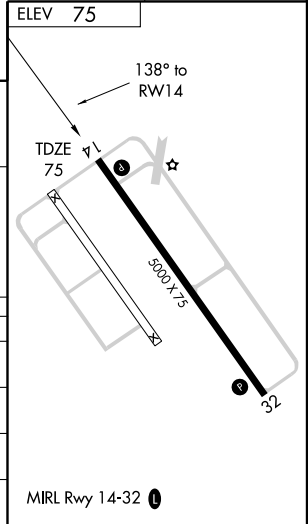
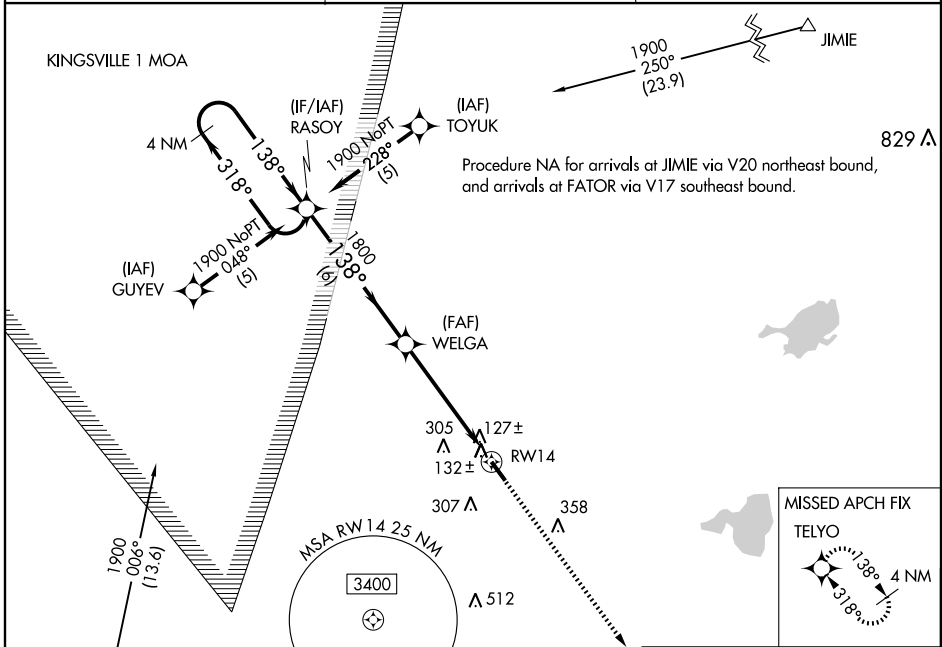
▼ Visibility reduction by helicopters NA. DME/DME RNP-0.3 NA.
For uncompensated BARO-VNAV systems, LNAV/VNAV NA
below -15°C (5°F) or above 48°C (120°F).

MISSED APPROACH: Climb to 1900
direct TELYO and hold.

AWOS-3
118.025

CORPUS APP CON
121.0 377.2

UNICOM
122.8 (CTAF) **0**



CATEGORY	A	B	C	D
LPV DA		325-1	250 (300-1)	
LNAV/VNAV DA		441-1¼	366 (400-1¼)	
LNAV MDA		440-1	365 (400-1)	440-1¼ 365 (400-1¼)
CIRCLING	500-1¼ 425 (500-1¼)	540-1¼ 465 (500-1¼)	620-1½ 545 (600-1½)	640-2 565 (600-2)

SC-3, 22 OCT 2009 to 19 NOV 2009

SC-3, 22 OCT 2009 to 19 NOV 2009