

TUCSON, ARIZONA

AL-10213 (FAA)

RNAV (GPS)-E

TUCSON/MARANA RGNL (AVQ)

APP CRS 282°	Rwy Idg TDZE Apt Elev	N/A N/A 2031
------------------------	-----------------------------	---

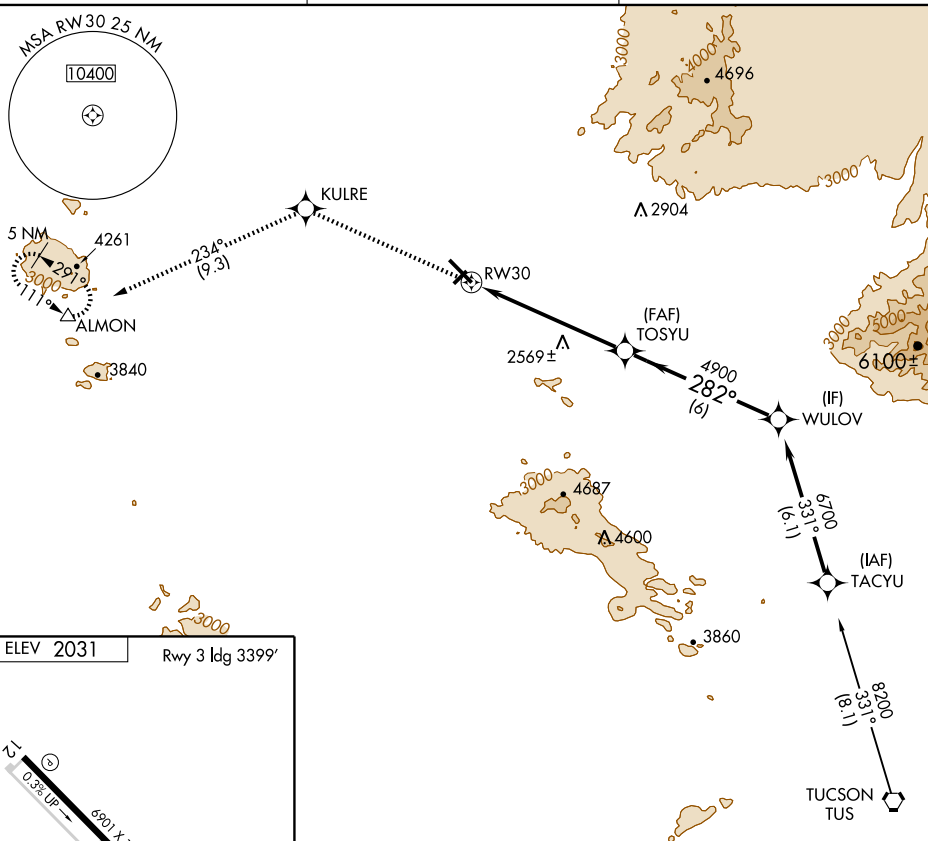
▽ If local altimeter setting not received, use Ryan Field altimeter setting and increase all MDAs 100 feet.
△NA DME/DME RNP-0.3 NA.

MISSED APPROACH: Climb to 6000 direct KULRE and 234° track to ALMON and hold, continue climb-in-hold to 6000.

AWOS-3
118.375

TUCSON APP CON
119.4 318.1

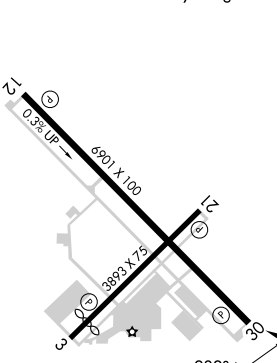
UNICOM
123.0 (CTAF) 0



SW-4, 22 OCT 2009 to 19 NOV 2009

SW-4, 22 OCT 2009 to 19 NOV 2009

ELEV 2031 Rwy 3 Idg 3399'



REIL Rwy 12 and 30 0
MIRL Rwy 3-21 and 12-30 0

6000	KULRE	234° Track	ALMON	TOSYU	WULOV
				4900	6700
				6 NM	6 NM
CATEGORY	A	B	C	D	
CIRCLING	2820-1 789 (800-1)	2820-1¼ 789 (800-1¼)	2820-2¼ 789 (800-2¼)	NA	Procedure Turn NA

TUCSON, ARIZONA
Orig-A 07298

32°25'N - 111°13'W

TUCSON/MARANA RGNL (AVQ)

RNAV (GPS)-E