

# RNAV (GPS) RWY 3

TUCSON/MARANA RGNL (AVQ)

APP CRS	Rwy ldg	<b>3399</b>
<b>033°</b>	TDZE	<b>2026</b>
	Apt Elev	<b>2031</b>

**▽** If local altimeter setting not received, use Ryan Field altimeter setting and increase all MDAs 100 feet.  
**▲ NA** DME/DME RNP-0.3 NA.  
 VDP NA when using Ryan Field altimeter setting.

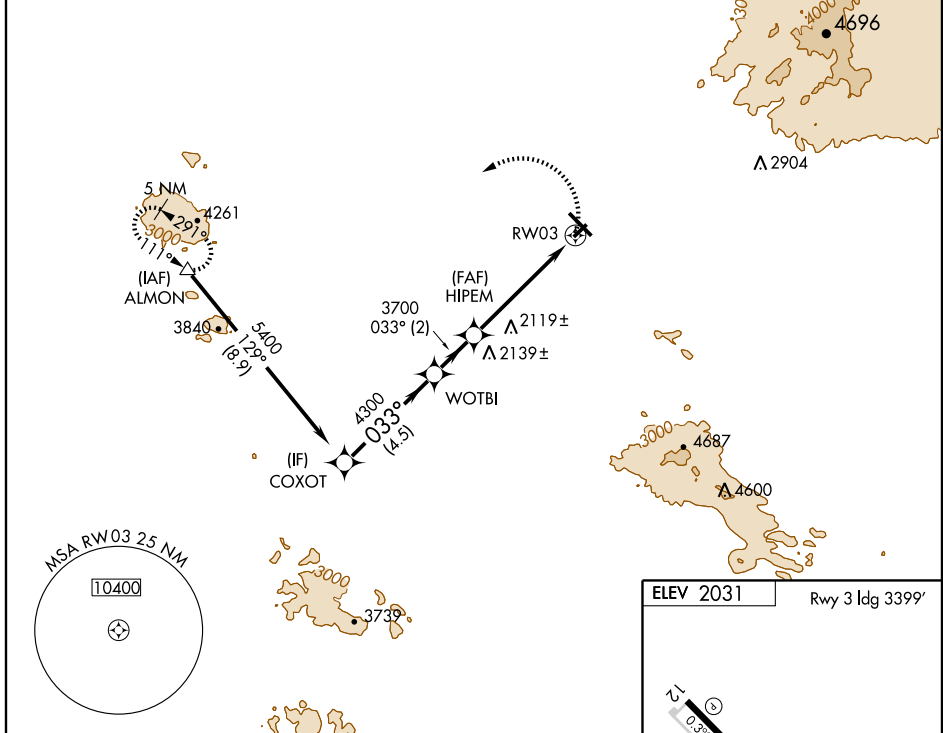
**MISSED APPROACH:** Climbing left turn to 6000 direct ALMON and hold, continue climb-in-hold to 6000.

AWOS-3  
**118.375**

TUCSON APP CON  
**119.4 318.1**

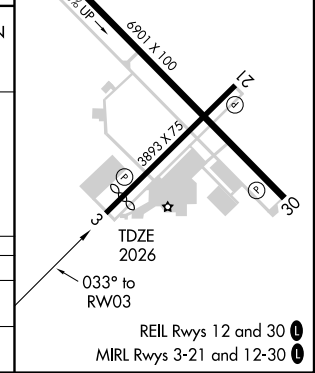
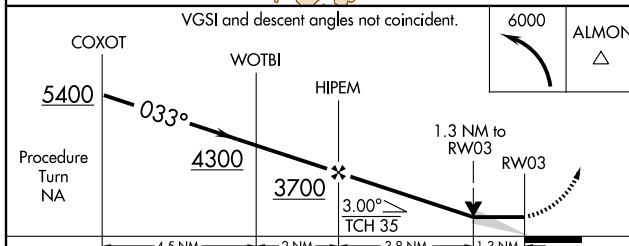
UNICOM  
**123.0 (CTAF) 0**

Procedure NA for arrivals at ALMON via V66-105 westbound.



SW-4, 22 OCT 2009 to 19 NOV 2009

SW-4, 22 OCT 2009 to 19 NOV 2009



CATEGORY	A	B	C	D
LNAV MDA	2480-1	454 (500-1)	2480-1½ 454 (500-1½)	NA
CIRCLING	2480-1 449 (500-1)	2500-1 469 (500-1)	2580-1½ 549 (600-1½)	NA