

RNAV (GPS) RWY 21

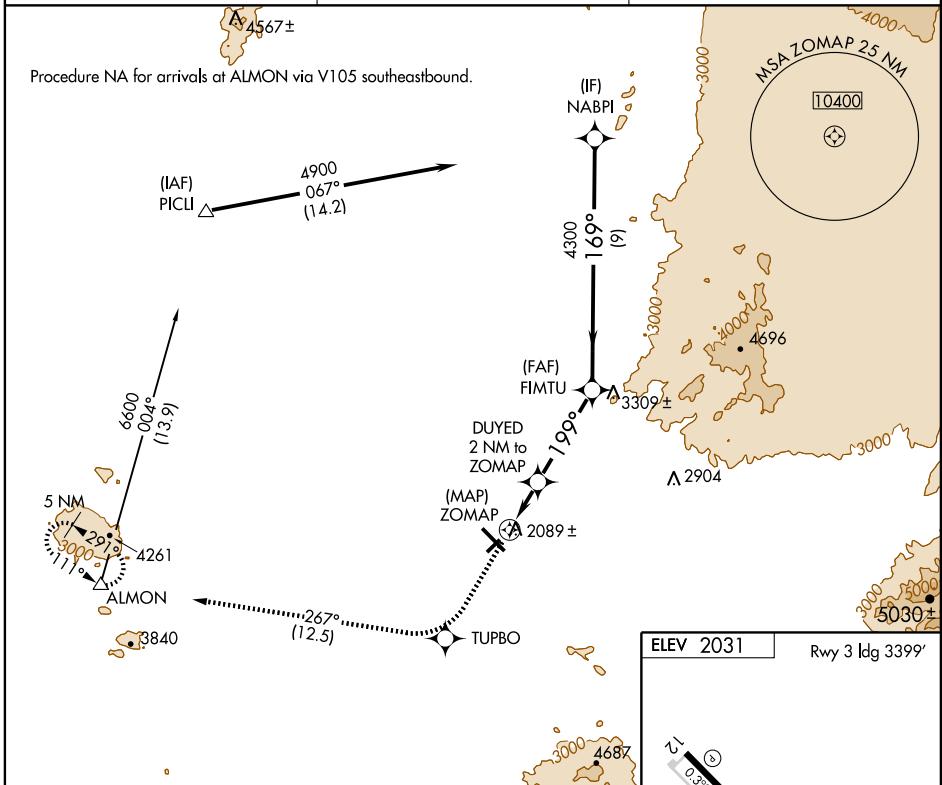
TUCSON/MARANA RGNL (AVQ)

APP CRS	Rwy ldg	3893
199°	TDZE	2026
	Apt Elev	2031

NA If local altimeter setting not received, use Ryan Field altimeter setting and increase all MDAs 100 feet.
 DME/DME RNP-0.3 NA.

MISSED APPROACH: Climb to 6000 direct TUPBO and via 267° track to ALMON and hold, continue climb-in-hold to 6000.

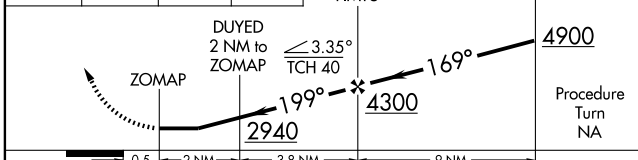
AWOS-3 118,375	TUCSON APP CON 119.4 318.1	UNICOM 123.0 (CTAF)
--------------------------	--------------------------------------	-------------------------------



SW-4, 22 OCT 2009 to 19 NOV 2009

SW-4, 22 OCT 2009 to 19 NOV 2009

6000	TUPBO	267° track	ALMON	VGSI and descent angles not coincident.	NABPI
------	-------	------------	-------	---	-------



CATEGORY	A	B	C	D
LNAV MDA	2640-1	614 (700-1)	2640-1¾ 614 (700-1¾)	NA
CIRCLING	2640-1	609 (700-1)	2640-1¾ 609 (700-1¾)	NA

ELEV 2031 Rwy 3 ldg 3399'

REIL Rwy 12 and 30
 MIRL Rwy 3-21 and 12-30