

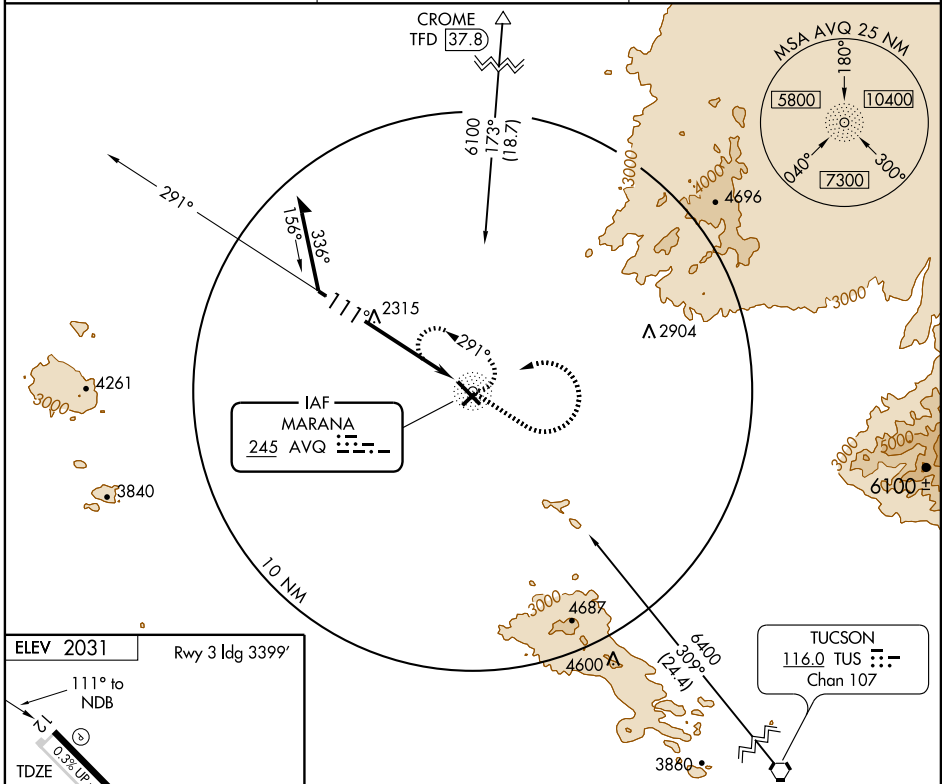
NDB AVQ 245	APP CRS 111°	Rwy Idg TDZE Apt Elev	6901 2022 2031
-----------------------	------------------------	-----------------------------	---

NDB RWY 12

TUCSON/MARANA RGNL (AVQ)

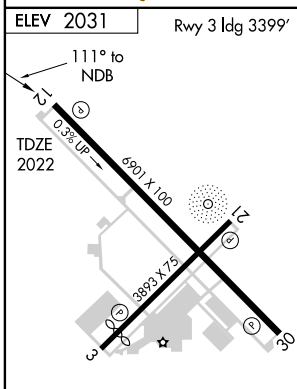
▼ If local altimeter setting not received, use Ryan Field altimeter setting and increase all MDAs 100 feet.
▲ NA MISSED APPROACH: Climb to 3900 then climbing left turn to 5800 direct AVQ NDB and hold, continue climb-in-hold to 5800.

AWOS-3 118.375	TUCSON APP CON 119.4 318.1	UNICOM 123.0 (CTAF) 0
--------------------------	--------------------------------------	---------------------------------



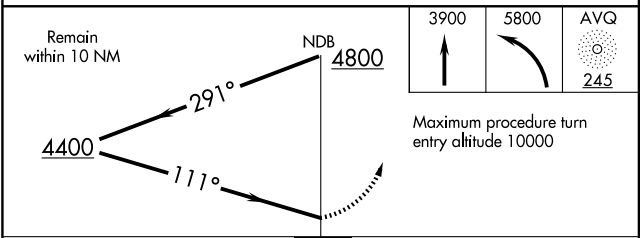
SW-4, 22 OCT 2009 to 19 NOV 2009

SW-4, 22 OCT 2009 to 19 NOV 2009



REIL Rws 12 and 30
 MIRL Rws 3-21 and 12-30

Knots	60	90	120	150	180
Min:Sec					



CATEGORY	A	B	C	D
S-12	3480-1¼ 1458 (1500-1¼)	3480-1½ 1458 (1500-½)	3480-3 1458 (1500-3)	NA
CIRCLING	3480-1¼ 1449 (1500-¼)	3480-1½ 1449 (1500-½)	3480-3 1449 (1500-3)	NA