

# RNAV (GPS) RWY 3

MELBOURNE MUNI - JOHN E. MILLER FIELD (42A)

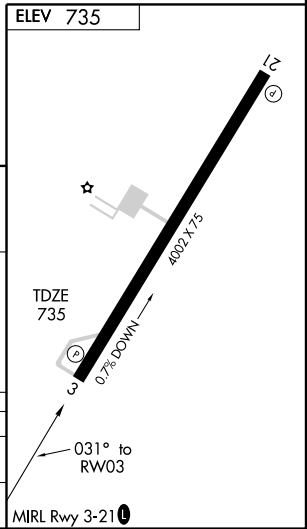
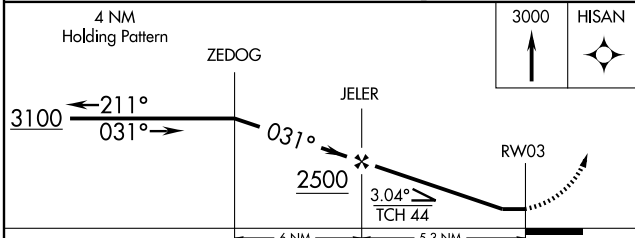
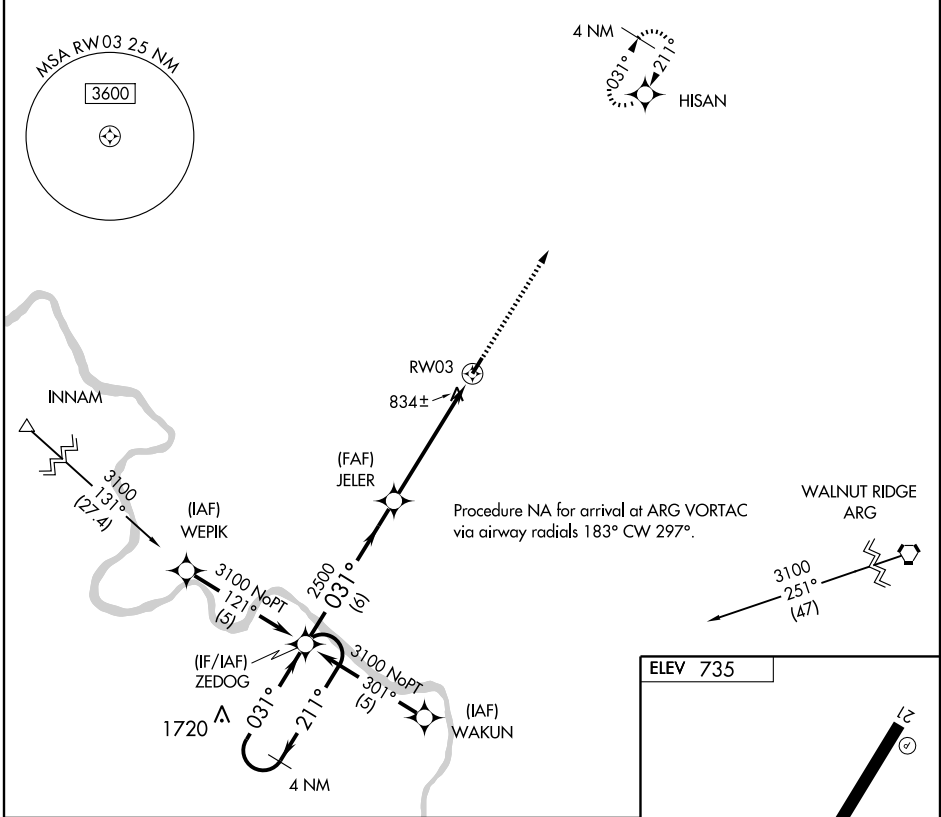
APP CRS <b>031°</b>	Rwy Idg <b>4002</b>
	TDZE <b>735</b>
	Apt Elev <b>735</b>

**▼** DME/DME RNP-0.3 NA. Use Batesville Rgnl altimeter setting; if not received, use Mountain Home/Ozark Rgnl altimeter setting and increase all MDAs 20 feet.

**▲** NA

MISSED APPROACH: Climb to 3000 direct HISAN and hold.

BATESVILLE REGIONAL AWOS-3 <b>126.375</b>	MEMPHIS CENTER <b>126.85 281.55</b>	CTAF <b>122.9</b>	<b>122.95</b> <b>①</b>
--	--	----------------------	------------------------



CATEGORY	A	B	C	D
LNVA MDA	1300-1	565 (600-1)	1300-1½ 565 (600-1½)	NA
CIRCLING	1360-1	625 (700-1)	1360-1¾ 625 (700-1¾)	NA

# RNAV (GPS) RWY 3

SC-1, 22 OCT 2009 to 19 NOV 2009

SC-1, 22 OCT 2009 to 19 NOV 2009