

RNAV (GPS) RWY 25

ST IGNACE / MACKINAC COUNTY (83D)

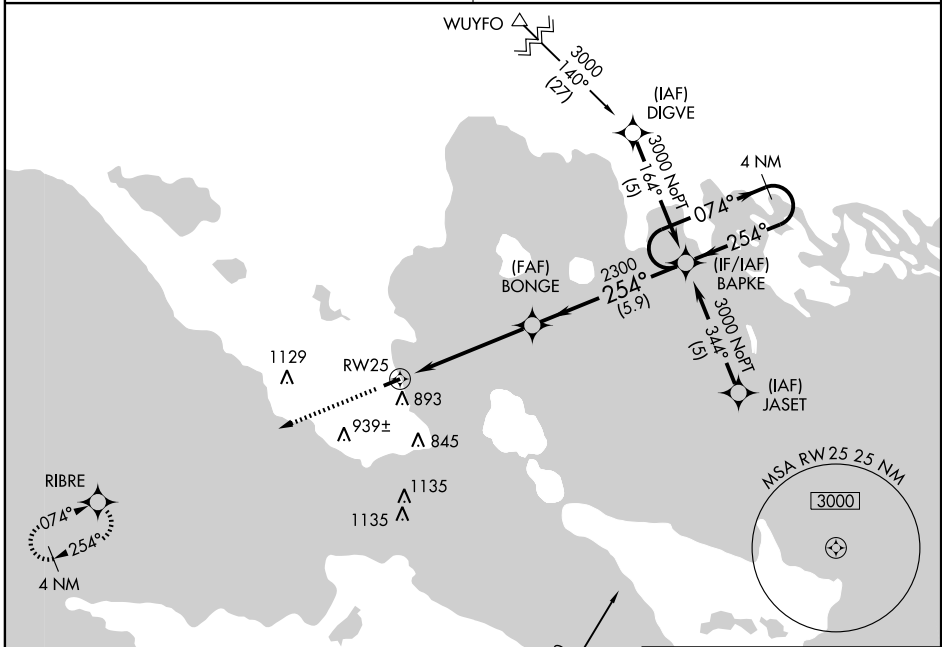
APP CRS	Rwy Idg	3800
254°	TDZE	623
	Apt Elev	623

▲ NA Use Mackinac Island altimeter setting.
GPS or RNP-0.3 required. DME/DME RNP-0.3 NA.
Circling NA at night south of RWY 7-25.

MISSED APPROACH: Climb to 3000 via 254° course to RIBRE WP and hold.

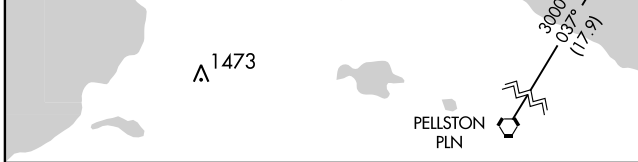
MINNEAPOLIS CENTER
134.6 354.05

UNICOM
122.7 (CTAF) 0

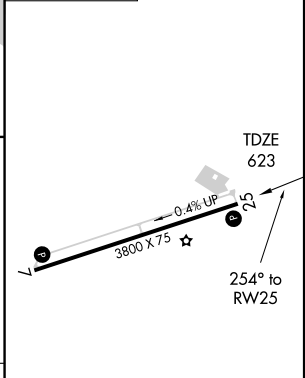
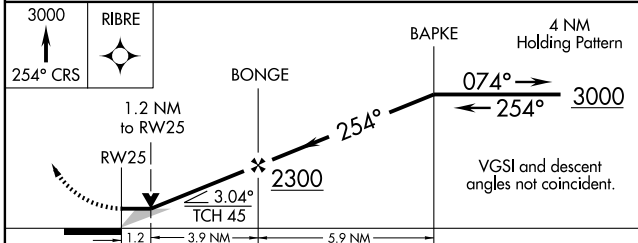


EC-1, 22 OCT 2009 to 19 NOV 2009

EC-1, 22 OCT 2009 to 19 NOV 2009



ELEV **623**



CATEGORY	A	B	C	D
LNVA MDA	1020-1 397 (400-1)			NA
CIRCLING	1260-1	637 (700-1)	1260-1¾ 637 (700-1¾)	NA

MIRL Rwy 7-25 0
REIL Rws 7 and 25 0