

# RNAV (GPS) RWY 4

NIKOLAI (FSP)(PAFS)

APP CRS <b>044°</b>	Rwy Idg <b>4003</b> TDZE <b>441</b> Apt Elev <b>441</b>
------------------------	---

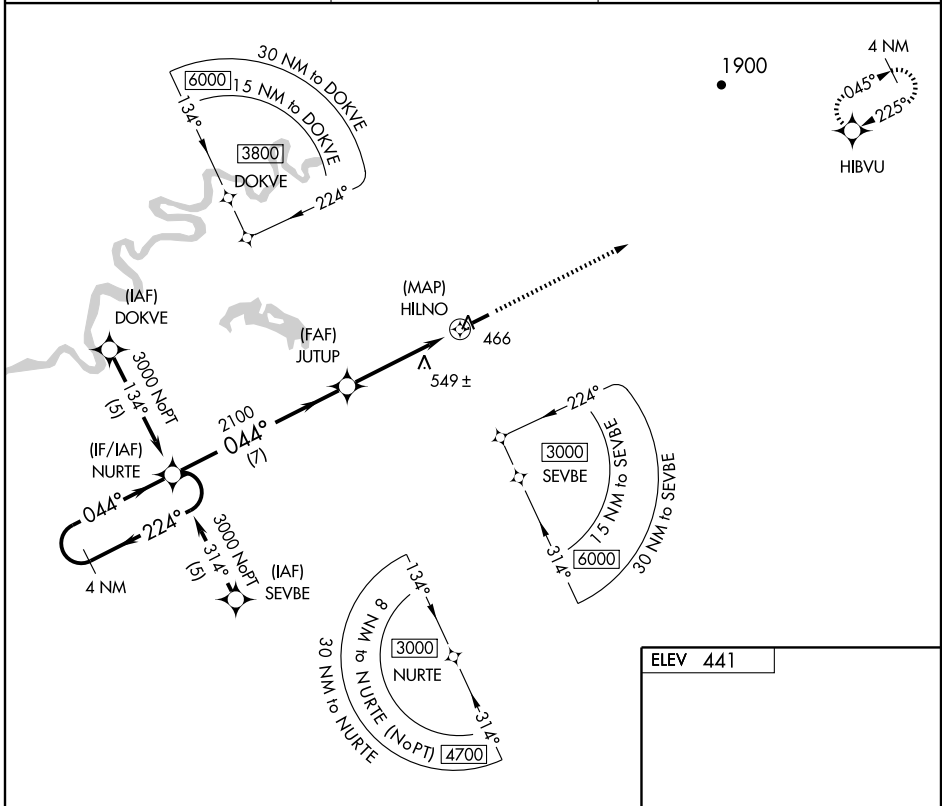
**▼** DME/DME RNP-0.3 NA.  
Use McGrath altimeter setting, if not received procedure NA.  
**▲** NA When VGSI inoperative, procedure NA at night.

MISSED APPROACH: Climb to 5000 direct HIBVU and hold, continue climb-in-hold to 5000.

MCGRATH ASOS  
**135.65**

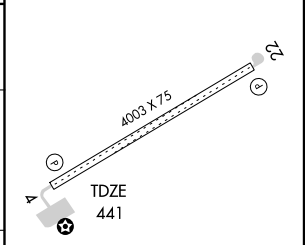
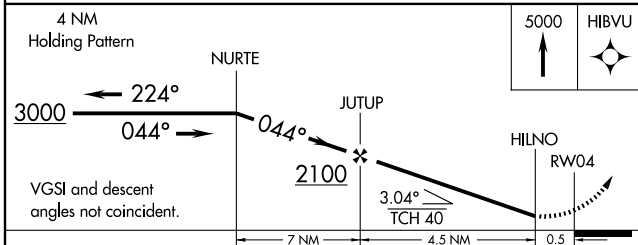
ANCHORAGE CENTER  
**128.1 353.8**

CTAF  
**122.8 0**



AK, 22 OCT 2009 to 17 DEC 2009

AK, 22 OCT 2009 to 17 DEC 2009



CATEGORY	A	B	C	D
LNVA MDA	960-1 519 (600-1)		960-1½ 519 (600-1½)	960-1¾ 519 (600-1¾)
CIRCLING	1000-1 559 (600-1)		1000-1½ 559 (600-1½)	1000-2 559 (600-2)

MIRL Rwy 4-22 **0**  
REIL Rwy 4 and 22 **0**