

# RNAV (GPS) RWY 36

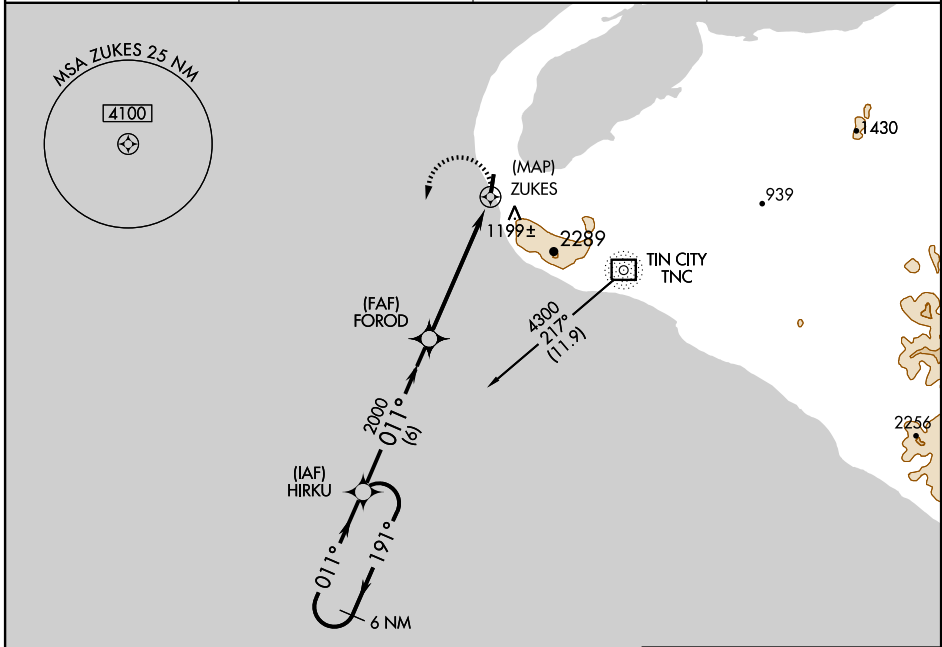
WALES (IWK) (PAIW)

APP CRS <b>011°</b>	Rwy Idg <b>4000</b>
	TDZE <b>22</b>
	Apt Elev <b>22</b>

**⚠** Circling NA east of Rwy 18-36. DME/DME RNP-0.3 NA.  
**⚠** NA Use Tin City altimeter setting; if not received, procedure NA.

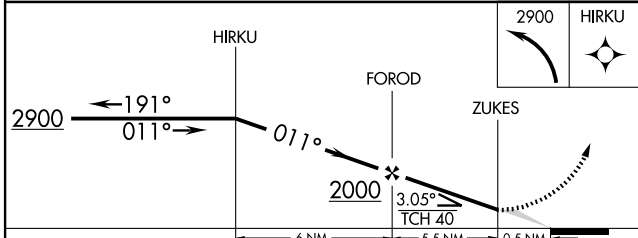
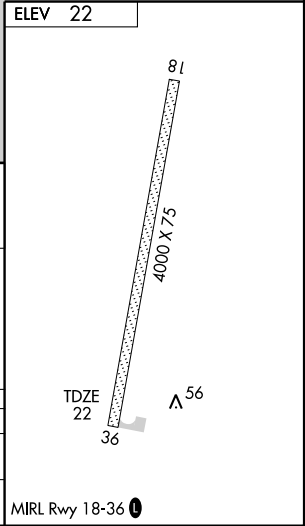
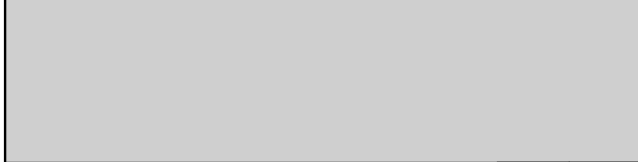
MISSED APPROACH: Climbing left turn to 2900 direct HIRKU WP and hold.

AWOS-3 <b>118.525</b>	ANCHORAGE CENTER <b>133.3 290.4</b>	NOME RADIO <b>122.6</b>	CTAF <b>123.0</b>
--------------------------	--	----------------------------	----------------------



AK, 22 OCT 2009 to 17 DEC 2009

AK, 22 OCT 2009 to 17 DEC 2009



CATEGORY	A	B	C	D
LNVA MDA	1540-1¼ 1518 (1600-1¼)	1540-1½ 1518 (1600-1½)	1540-3 1518 (1600-3)	NA
CIRCLING	1540-1¼ 1518 (1600-1¼)	1540-1½ 1518 (1600-1½)	1540-3 1518 (1600-3)	NA

# RNAV (GPS) RWY 36