

RNAV (GPS) RWY 25

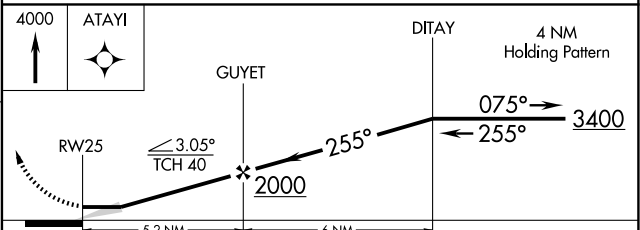
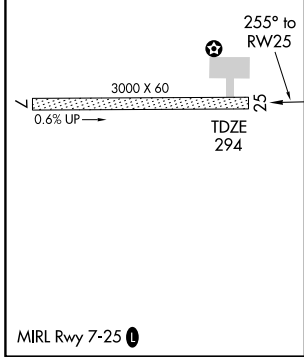
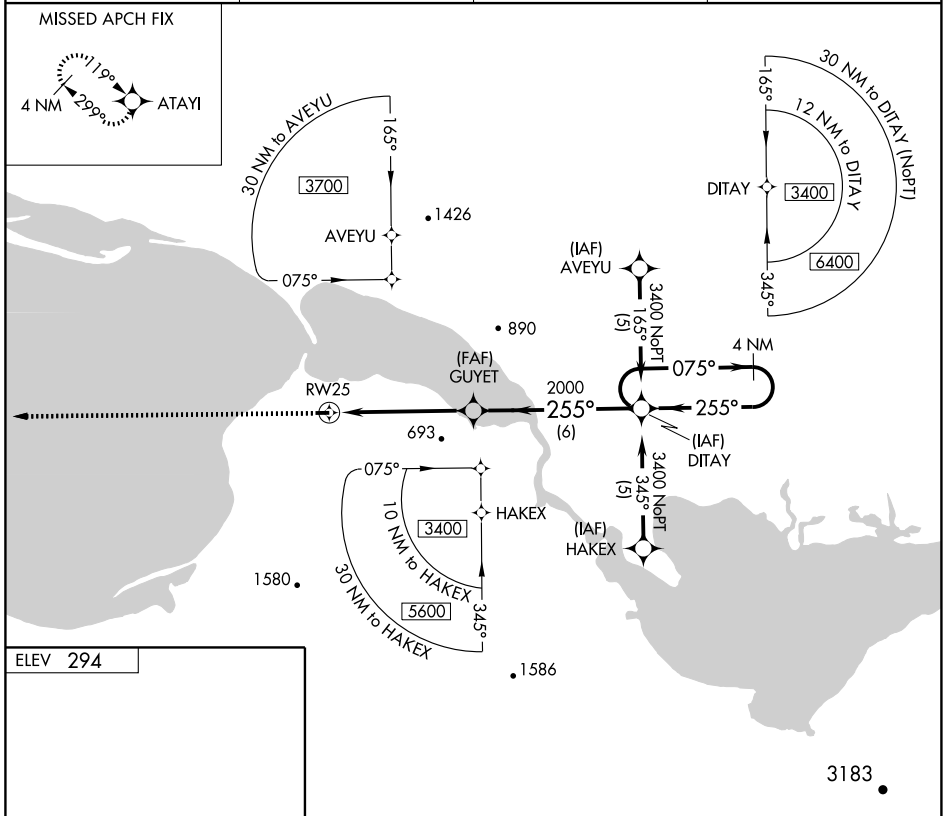
TELLER (TER) (PATE)

APP CRS 255°	Rwy Idg 3000
	TDZE 294
	Apt Elev 294

Use Tin City altimeter setting.
 DME/DME RNP- 0.3 NA.

MISSED APPROACH: Climb to 4000 direct ATAYI and hold.

AWOS-3 118.375	ANCHORAGE CENTER 133.3 290.4	NOME RADIO 122.6	CTAF 123.0
--------------------------	--	----------------------------	----------------------



CATEGORY	A	B	C	D
LNAV MDA	1260-1¼ 966 (1000-1¼)	1260-1½ 966 (1000-1½)	1260-3 966 (1000-3)	NA
CIRCLING	1260-1¼ 966 (1000-1¼)	1260-1½ 966 (1000-1½)	1260-3 966 (1000-3)	NA

AK, 22 OCT 2009 to 17 DEC 2009

AK, 22 OCT 2009 to 17 DEC 2009