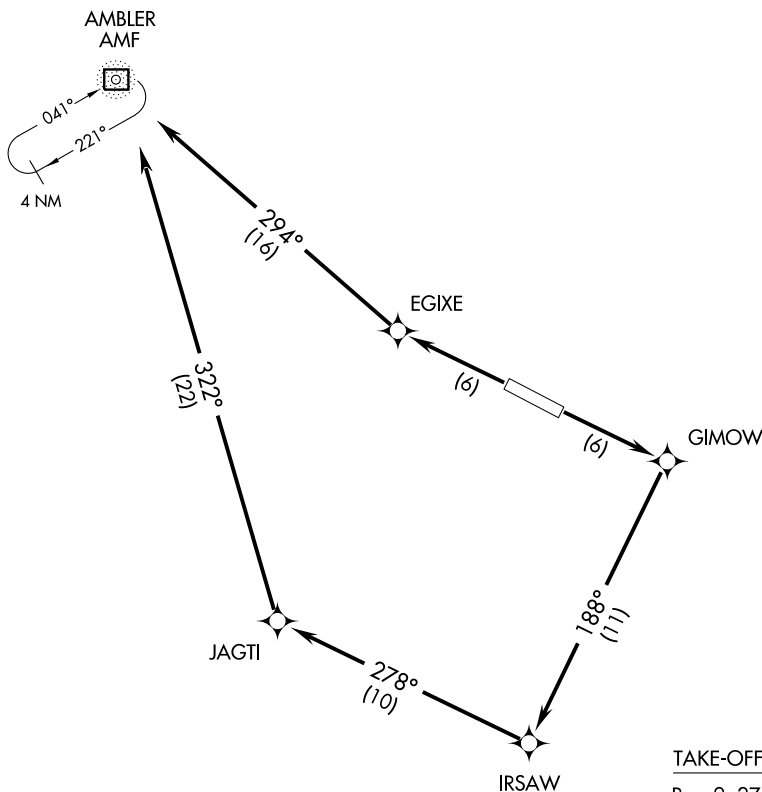


AMBLR ONE DEPARTURE (RNAV)

ANCHORAGE CENTER
119.2 263.0
CTAF 122.7



TAKE-OFF MINIMUMS:

Rwy 9, 27 Standard.

NOTE: GPS Required
NOTE: RNAV 1.

NOTE: Chart not to scale.



DEPARTURE ROUTE DESCRIPTION

TAKE-OFF RWY 9: Climb to 4000 or ATC assigned higher altitude direct GIMOW, and via track 188° to IRSAW, and via track 278° to JAGTI, and via track 322° to AMF NDB/DME.

TAKE-OFF RWY 27: Climb to 4000 or ATC assigned higher altitude direct EGIXE and via track 294° to AMF NDB/DME.