

RNAV (GPS) RWY 7

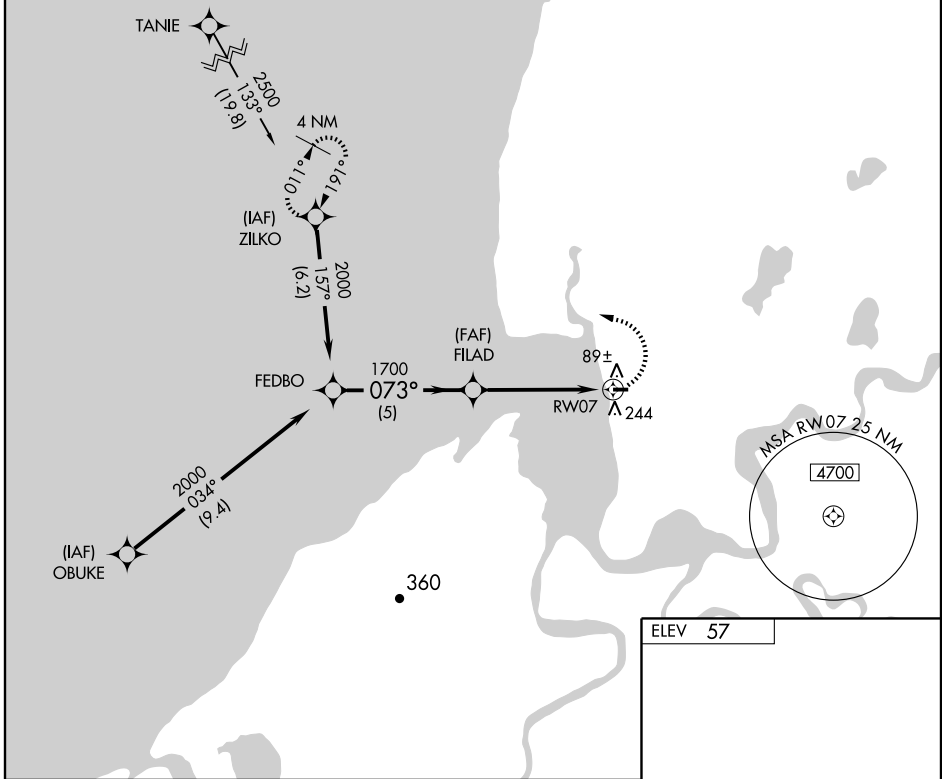
PILOT POINT (PnP)(PAPN)

APP CRS 073°	Rwy ldg TDZE Apt Elev	3280 57 57
------------------------	-----------------------------	---------------------------------------

▼ If local altimeter setting not received, use King Salmon altimeter setting and increase all MDAs 180 feet. DME/DME RNP-0.3 NA.
▲ VDP NA with King Salmon altimeter setting.

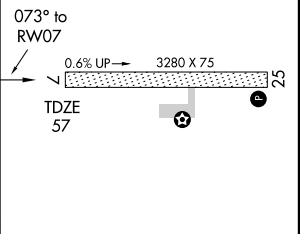
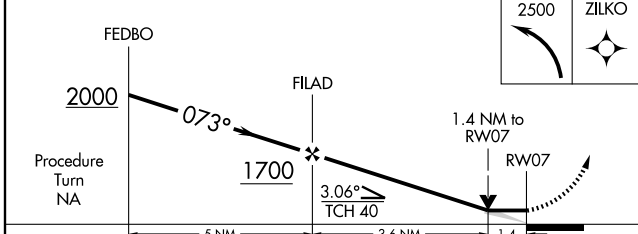
MISSED APPROACH: Climbing left turn to 2500 direct ZILKO and hold.

AWOS-3 118.375	ANCHORAGE CENTER 132.9 288.3	CTAF 122.9 0
--------------------------	--	------------------------



AK, 22 OCT 2009 to 17 DEC 2009

AK, 22 OCT 2009 to 17 DEC 2009



CATEGORY	A	B	C	D
LNVA MDA	520-1	463 (500-1)		NA
CIRCLING	600-1	543 (600-1)		NA

ELEV 57

MIRL Rwy 7-25 0