

# RNAV (GPS) RWY 14

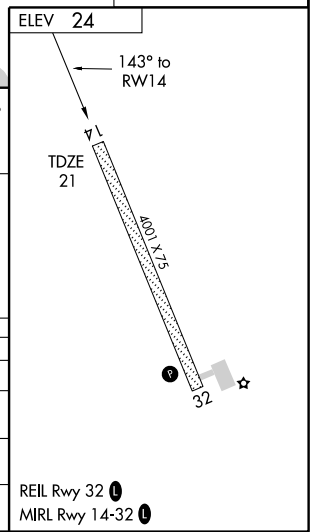
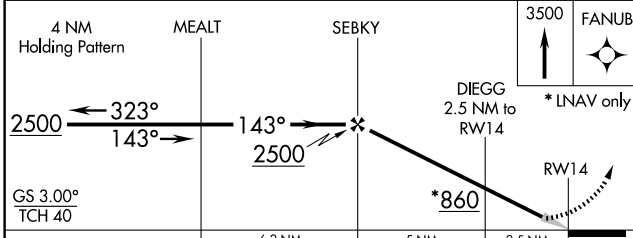
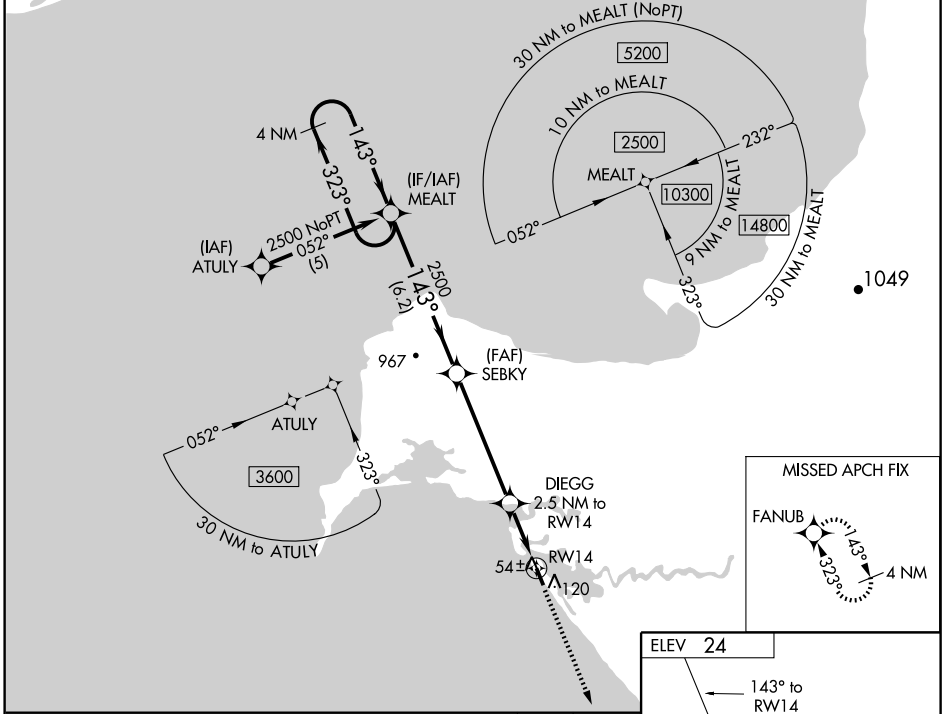
SHAKTOOLIK (2C7) (PFSH)

WAAS CH <b>63013</b> <b>W14A</b>	APP CRS <b>143°</b>	Rwy Idg TDZE Apt Elev	<b>4001</b> <b>21</b> <b>24</b>
--	------------------------	-----------------------------	---------------------------------------

**▽** Baro-VNAV NA. DME/DME RNP-0.3 NA.  
**▲ NA** Use Unalakleet altimeter setting, when not received, use Koyuk altimeter setting and increase all DA 25 feet and all MDA 40 feet, increase LNAV/VNAV all Cats visibility ¼ mile.

**MISSED APPROACH:** Climb to 3500 direct FANUB and hold, continue climb-in-hold to 3500.

UNALAKLEET AWOS-3 <b>132.25</b>	ANCHORAGE CENTER <b>135.7 335.5</b>	UNICOM <b>122.8 (CTAF) 0</b>
------------------------------------	--	---------------------------------



	A		B		C		D	
CATEGORY	A		B		C		D	
LPV DA	344-1¼		323 (400-1¼)					
LNAV/VNAV DA	397-1¼		376 (400-1¼)					
LNAV MDA	380-1		359 (400-1)		380-1¼		359 (400-1¼)	
CIRCLING	560-1		536 (600-1)		560-1½		580-2	
					536 (600-1½)		556 (600-2)	

AK, 22 OCT 2009 to 17 DEC 2009

AK, 22 OCT 2009 to 17 DEC 2009