

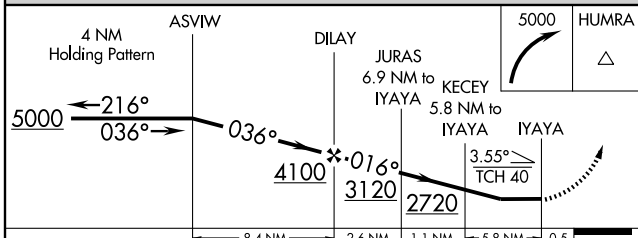
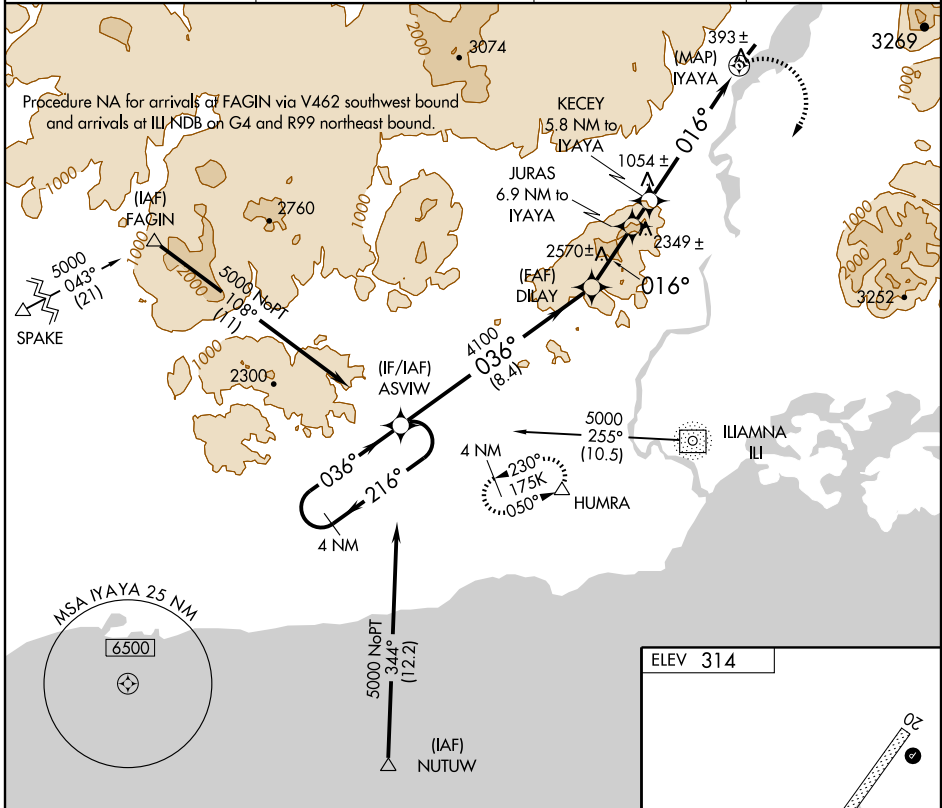
RNAV (GPS) RWY 2

NONDALTON (5NN) (PANO)

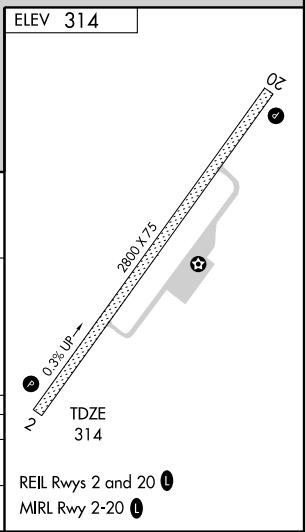
APP CRS	Rwy Idg	2800
016°	TDZE	314
	Apt Elev	314

▼ Circling NA northwest of Rwy 2-20. Use Iliamna altimeter setting; if not received, procedure NA. Circling to Rwy 20 NA at night.
▲ NA DME/DME RNP-0.3 NA. MISSED APPROACH: Climbing right turn to 5000 direct HUMRA and hold.

IILAMNA ASOS	ANCHORAGE CENTER	CTAF	KENAI RADIO
134.95	118.8	122.9	122.2



CATEGORY	A	B	C	D
LNVA MDA	1380-1¼ 1066 (1100-1¼)	1380-1½ 1066 (1100-1½)	NA	
CIRCLING	1380-1¼ 1066 (1100-1¼)	1380-1½ 1066 (1100-1½)	NA	



AK, 22 OCT 2009 to 17 DEC 2009

AK, 22 OCT 2009 to 17 DEC 2009