

RNAV (GPS) RWY 3

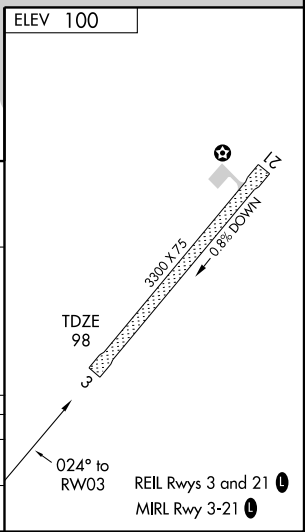
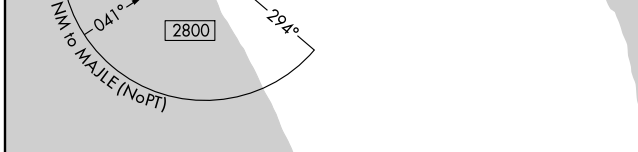
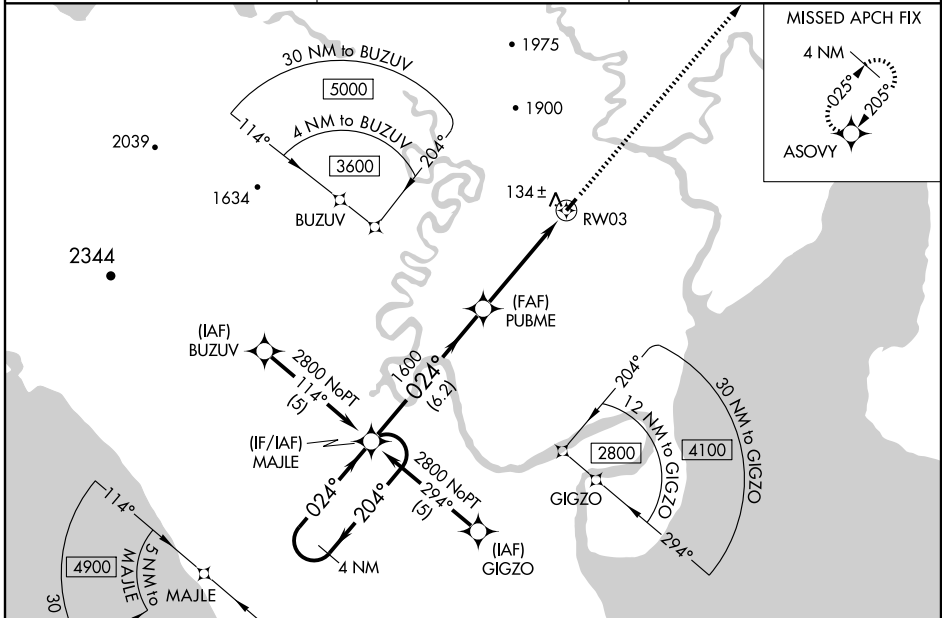
MANOKOTAK (MBA) (PAMB)

| | |
|------------------------|------------------------|
| APP CRS 024° | Rwy Idg 3300 |
| | TDZE 98 |
| | Apt Elev 100 |

▽ DME/DME RNP-0.3 NA.
△ VDP NA when using Dillingham altimeter setting.
 When local altimeter setting not received use Dillingham altimeter setting and increase all MDA 40 feet and LNAV Cat D visibility ¼ mile.

MISSED APPROACH: Climb to 3600 direct ASOVY and hold.

| | | |
|------------------------|--|------------------------|
| ASOS 120.625 | ANCHORAGE CENTER 132.75 282.35 | CTAF 122.9 0 |
|------------------------|--|------------------------|



| | | | | |
|----------------------|----------------------|----------------------|------------------------|----------------------|
| 4 NM Holding Pattern | MAJLE | PUBME | RWY 3 | |
| 2800 | ← 204° | 024° → | 1600 | |
| | 024° | 3.04 NM TCH 40 | 0.9 NM to RWY 3 | |
| | 6.2 NM | 3.7 NM | 0.9 NM | |
| CATEGORY | A | B | C | D |
| LNAV MDA | 400-1 302 (300-1) | | | |
| CIRCLING | 540-1 440 (500-1) | 560-1 460 (500-1) | 560-1½ 460 (500-1½) | 660-2 560 (600-2) |

AK, 22 OCT 2009 to 17 DEC 2009

AK, 22 OCT 2009 to 17 DEC 2009