

# RNAV (GPS) RWY 24

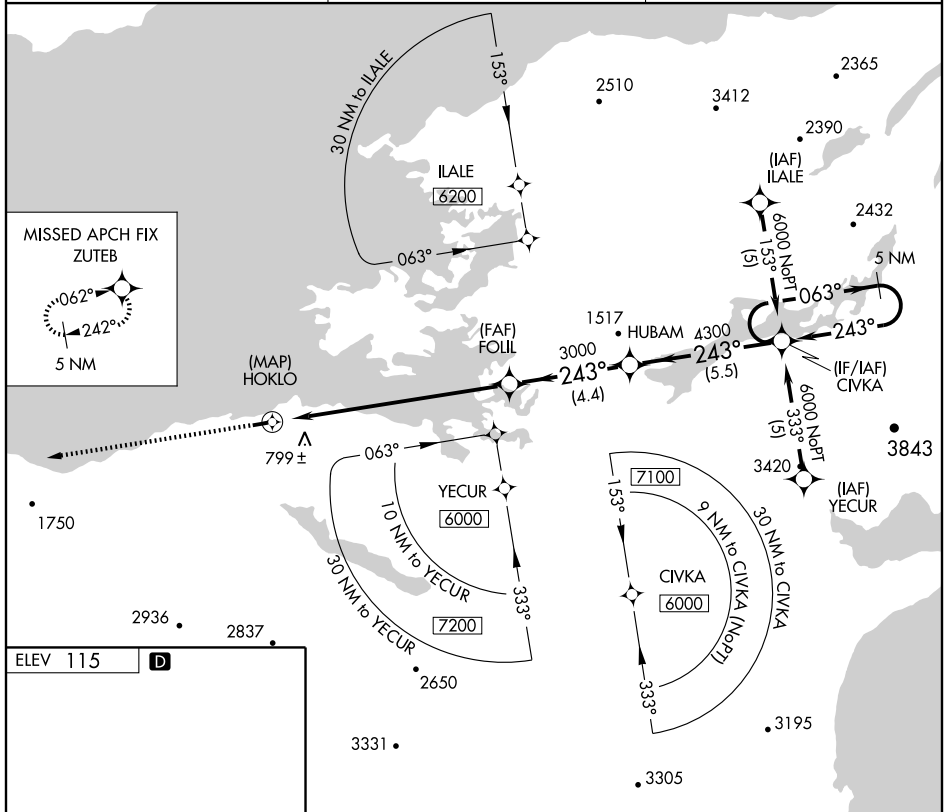
KOKHANOK (9K2) (PFFK)

APP CRS <b>243°</b>	Rwy Idg <b>3300</b>
	TDZE <b>115</b>
	Apt Elev <b>115</b>

**▼** Use Iliamna altimeter setting. DME/DME RNP-0.3 NA.  
**▲ NA** Procedure NA at night.  
**▲ NA** Visibility reduction by helicopters NA.

MISSED APPROACH: Climb to 4400 direct ZUTEB and hold, continue climb-in-hold to 4400.

ILIAMNA ASOS <b>134.95</b>	ANCHORAGE CENTER <b>124.8 354.0</b>	CTAF <b>122.9</b>
-------------------------------	--	----------------------

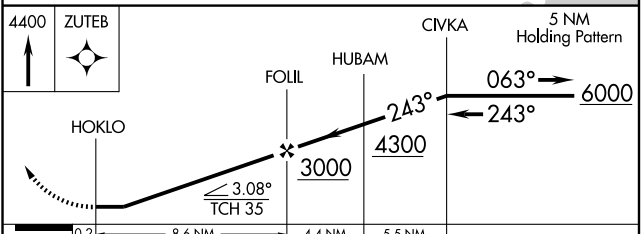


AK, 22 OCT 2009 to 17 DEC 2009

AK, 22 OCT 2009 to 17 DEC 2009

ELEV 115 **D**

REIL RWY 6 & 24 **Ⓛ**  
 MIRL RWY 6-24 **Ⓛ**



CATEGORY	A	B	C	D
LNAV MDA	1120-1¼ 1005 (1100-1¼)	1120-1½ 1005 (1100-1½)		NA
CIRCLING	1120-1¼ 1005 (1100-1¼)	1120-1½ 1005 (1100-1½)		NA