

KALTAG, ALASKA

AL-10158 (FAA)

RNAV (GPS) RWY 21

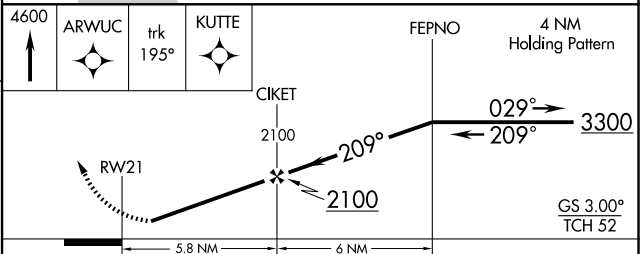
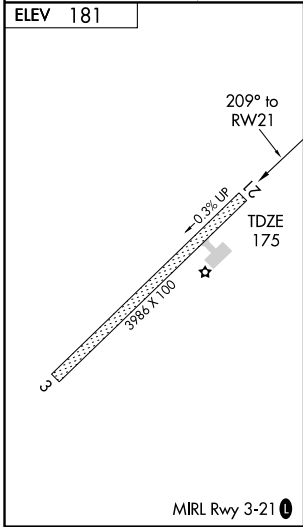
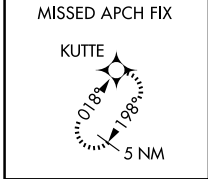
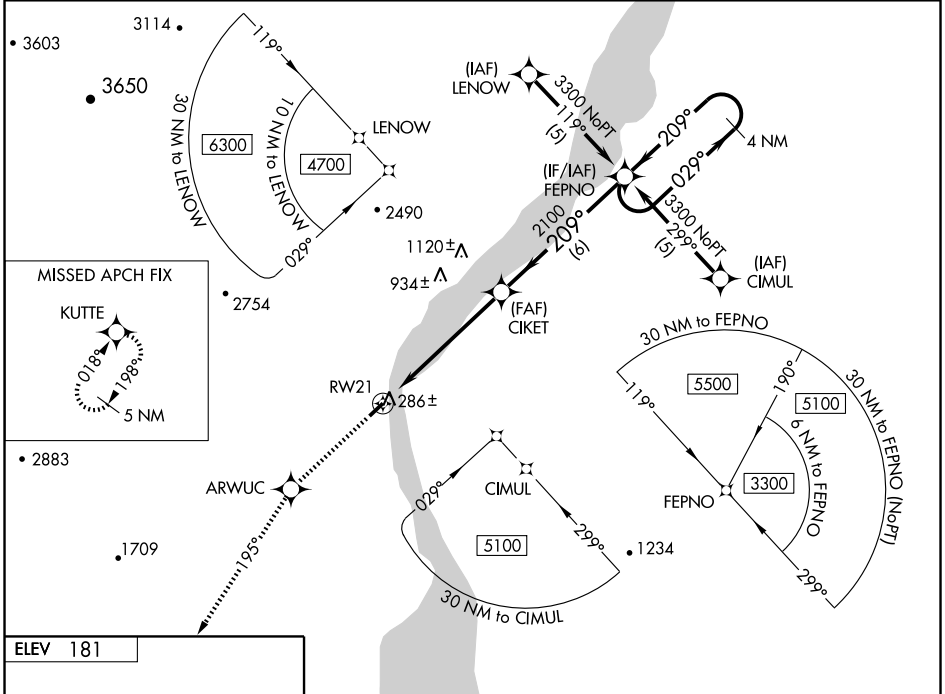
KALTAG (KAL)(PAKV)

WAAS CH 53315 W21A	APP CRS 209°	Rwy Idg TDZE Apt Elev	3986 175 181
--	------------------------	-----------------------------	---

⚠ For uncompensated Baro-VNAV systems, LNAV/VNAV NA below -25°C (-13°F) or above 54°C (130°F).
DME/DME RNP-0.3 NA.
Visibility reduction by helicopters NA.

MISSED APPROACH: Climb to 4600 direct ARWUC and via track 195° to KUTTE and hold, continue climb-in-hold to 4600.

ASOS 135.25	ANCHORAGE CENTER 127.0 290.2	CTAF 122.9
-----------------------	--	----------------------



CATEGORY	A	B	C	D
LPV DA	493-1 318 (400-1)			NA
LNAV/VNAV DA	598-1½ 423 (500-1½)			NA
LNAV MDA	960-1 785 (800-1)	960-1¼ 785 (800-1¼)	960-2¼ 785 (800-2¼)	NA
CIRCLING	960-1 779 (800-1)	960-1¼ 779 (800-1¼)	960-2¼ 779 (800-2¼)	NA

KALTAG, ALASKA
Amdt 1 09239

64° 19' N-158° 44' W

RNAV (GPS) RWY 21

AK, 22 OCT 2009 to 17 DEC 2009

AK, 22 OCT 2009 to 17 DEC 2009