

# RNAV (GPS) RWY 5

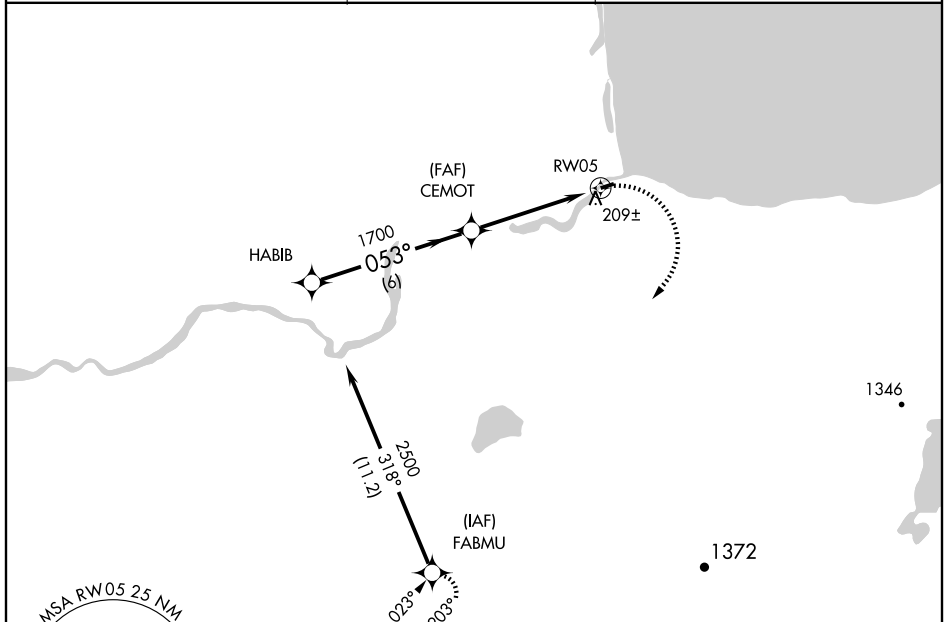
IGIUGIG (IGG)(PAIG)

APP CRS <b>053°</b>	Rwy Idg <b>3000</b>
	TDZE <b>90</b>
	Apt Elev <b>90</b>

**⚠** DME/DME RNP -0.3 NA. If local altimeter setting not received, use Iliamna altimeter setting and increase all MDAs 120 feet.

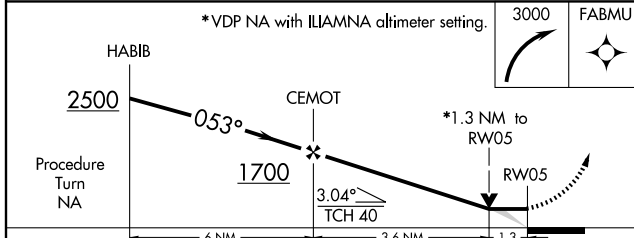
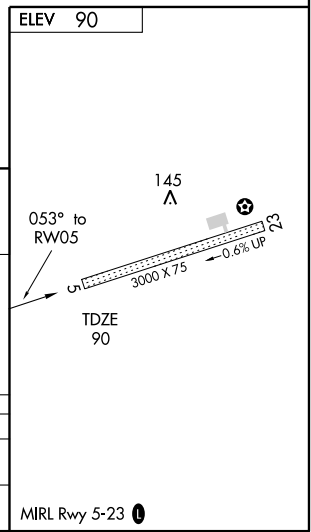
**MISSED APPROACH:** Climbing right turn to 3000 direct FABMU and hold.

ASOS <b>119.925</b>	ANCHORAGE CENTER <b>118.8</b>	CTAF <b>122.9</b>
------------------------	----------------------------------	----------------------



AK, 22 OCT 2009 to 17 DEC 2009

AK, 22 OCT 2009 to 17 DEC 2009



CATEGORY	A	B	C	D
LNVA MDA	460-1	370 (400-1)	NA	
CIRCLING	520-1 430 (500-1)	540-1 450 (500-1)	NA	