

RNAV (GPS) RWY 20

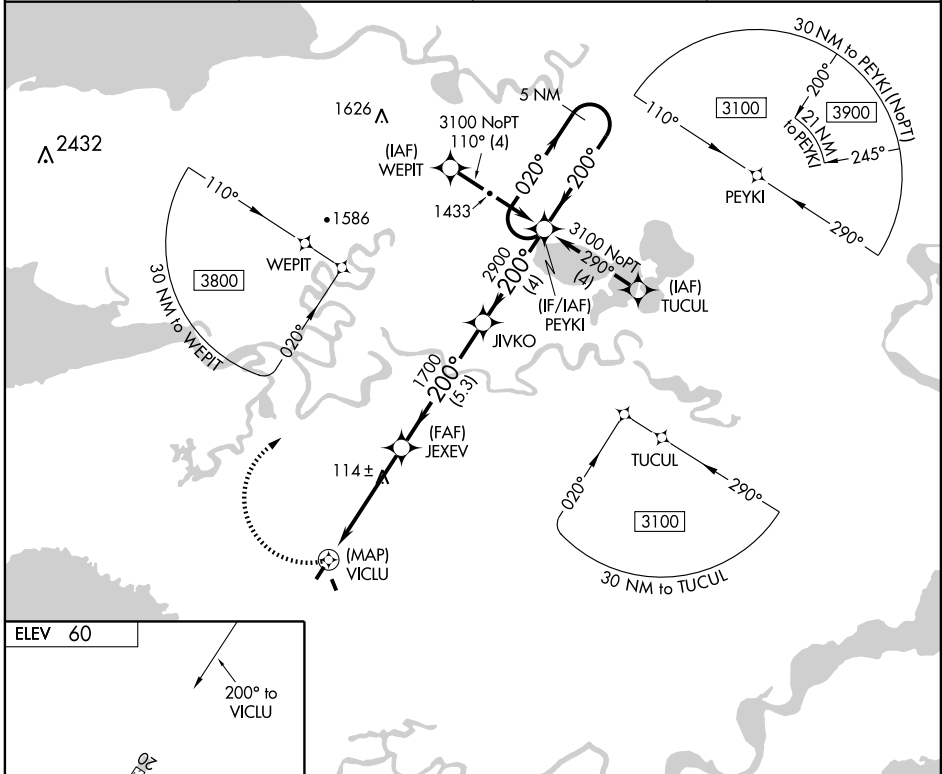
CHEVAK (VAK)(PAVA)

APP CRS	Rwy Idg	3200
200°	TDZE	47
	Apt Elev	60

▼ Procedure NA at night. DME/DME RNP- 0.3 NA.
▲ Visibility reduction by helicopters NA.
 If local altimeter setting not received, use Hooper Bay altimeter setting and increase all MDAs 60 feet.

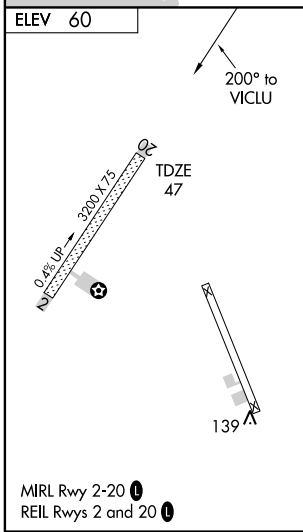
MISSED APPROACH: Climbing right turn to 3100 direct PEYKI and hold.

AWOS-3 120.625	ANCHORAGE CENTER 124.5 226.8	UNICOM 122.8	CTAF 123.0
--------------------------	--	------------------------	----------------------



AK, 22 OCT 2009 to 17 DEC 2009

AK, 22 OCT 2009 to 17 DEC 2009



	3100	PEYKI	JIVKO	PEYKI	5 NM Holding Pattern
			JEXEV		
	VICLU	JEXEV	JIVKO	PEYKI	3100
		3.00° TCH 40	1700	2900	020° / 200°
	0.3	4.8 NM	5.3 NM	4 NM	
CATEGORY	A	B	C	D	
LNAV MDA	460-1	413 (400-1)			NA
CIRCLING	520-1	460 (500-1)			NA