

# RNAV (GPS) RWY 2

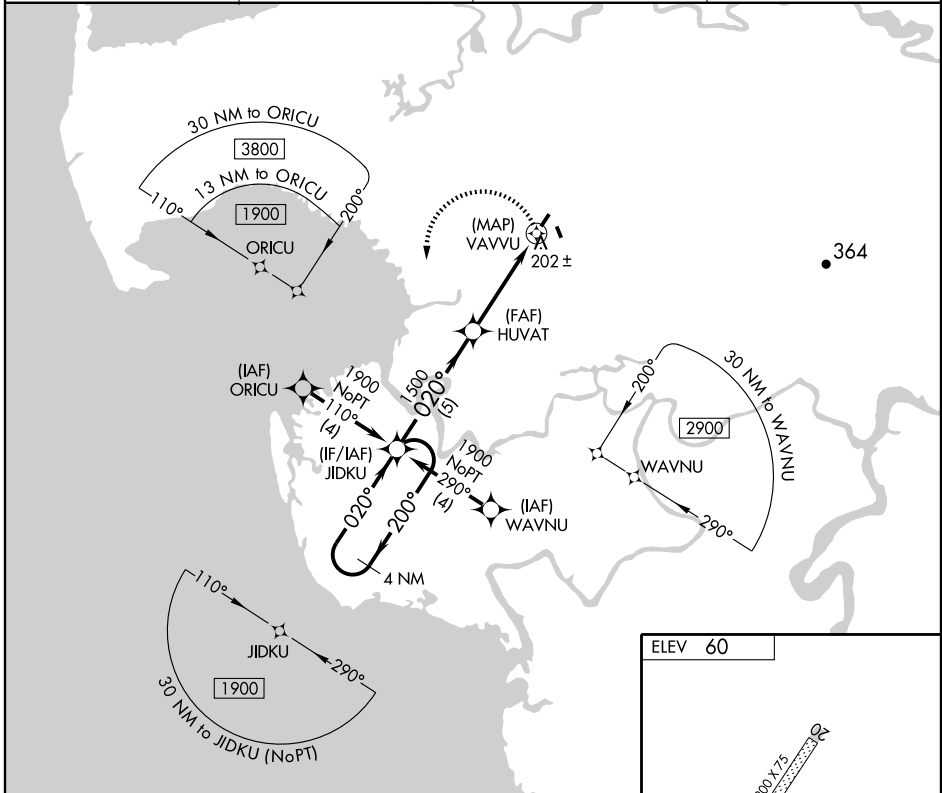
CHEVAK (VAK)(PAVA)

APP CRS	Rwy Idg	<b>3200</b>
<b>020°</b>	TDZE	<b>47</b>
	Apt Elev	<b>60</b>

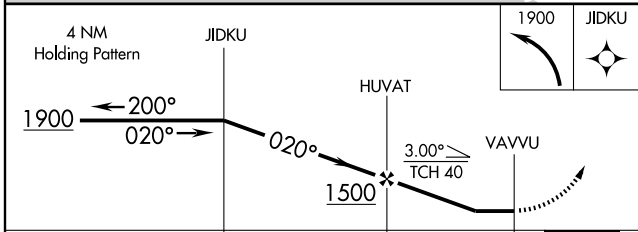
**⚠** Procedure NA at night. DME/DME RNP-0.3 NA.  
 Visibility reduction by helicopters NA.  
**⚠** If local altimeter setting not received, use Hooper Bay altimeter setting and increase all MDAs 60 feet.

MISSED APPROACH: Climbing left turn to 1900 direct JIDKU and hold.

AWOS-3 <b>120.625</b>	ANCHORAGE CENTER <b>124.5 226.8</b>	UNICOM <b>122.8</b>	CTAF <b>123.0</b>
--------------------------	----------------------------------------	------------------------	----------------------



AK, 22 OCT 2009 to 17 DEC 2009



MIRL Rwy 2-20  
 REIL Rwy 2 and 20