

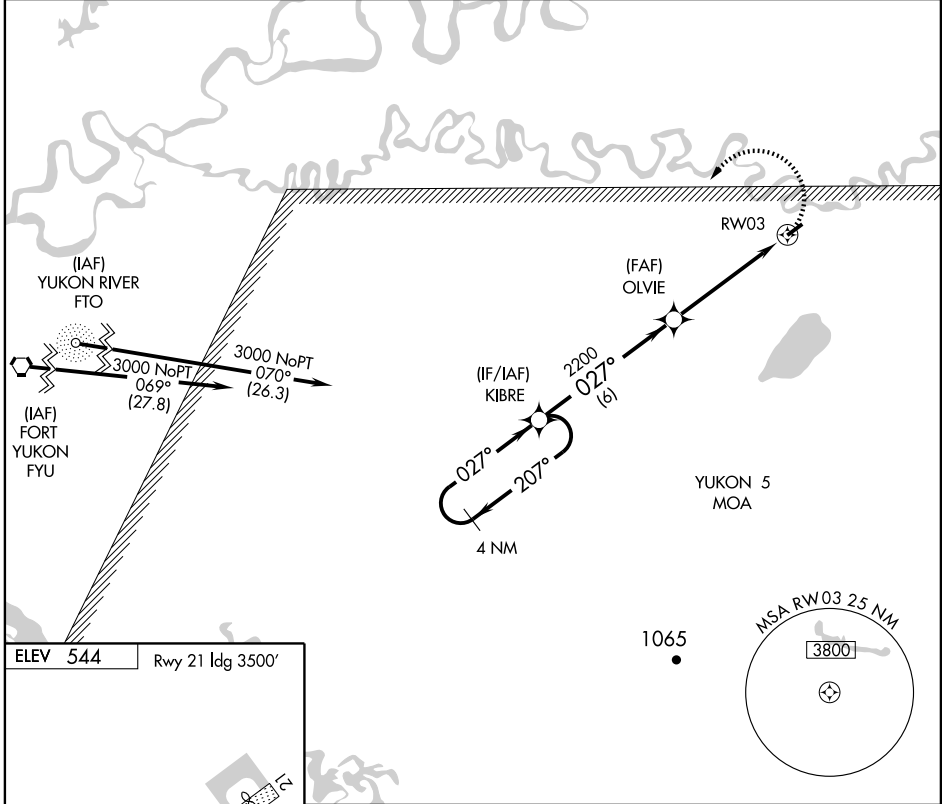
# RNAV (GPS) RWY 3

CHALKYITSIK (CIK) (PACI)

APP CRS <b>027°</b>	Rwy Idg TDZE Apt Elev	<b>4000</b> <b>538</b> <b>544</b>
------------------------	-----------------------------	---

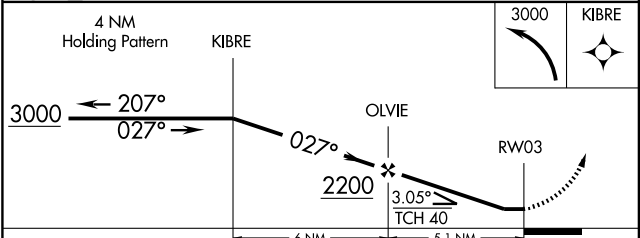
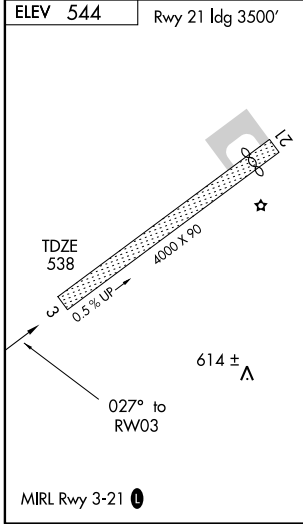
<b>▽</b> DME/DME RNP-0.3 NA. <b>▲</b> NA Use Fort Yukon altimeter setting.	MISSED APPROACH: Climbing left turn to 3000 direct KIBRE and hold.
---	--

FORT YUKON AWOS-3 <b>125.8</b>	ANCHORAGE CENTER <b>135.0 225.4</b>	CTAF <b>122.9 0</b>
-----------------------------------	--	------------------------



AK, 22 OCT 2009 to 17 DEC 2009

AK, 22 OCT 2009 to 17 DEC 2009



CATEGORY	A	B	C	D
LNAV MDA	1020-1	482 (500-1)	1020-1¼ 482 (500-1¼)	NA
CIRCLING	1120-1 576 (600-1)	1180-1 636 (700-1)	1220-2 676 (700-2)	NA