

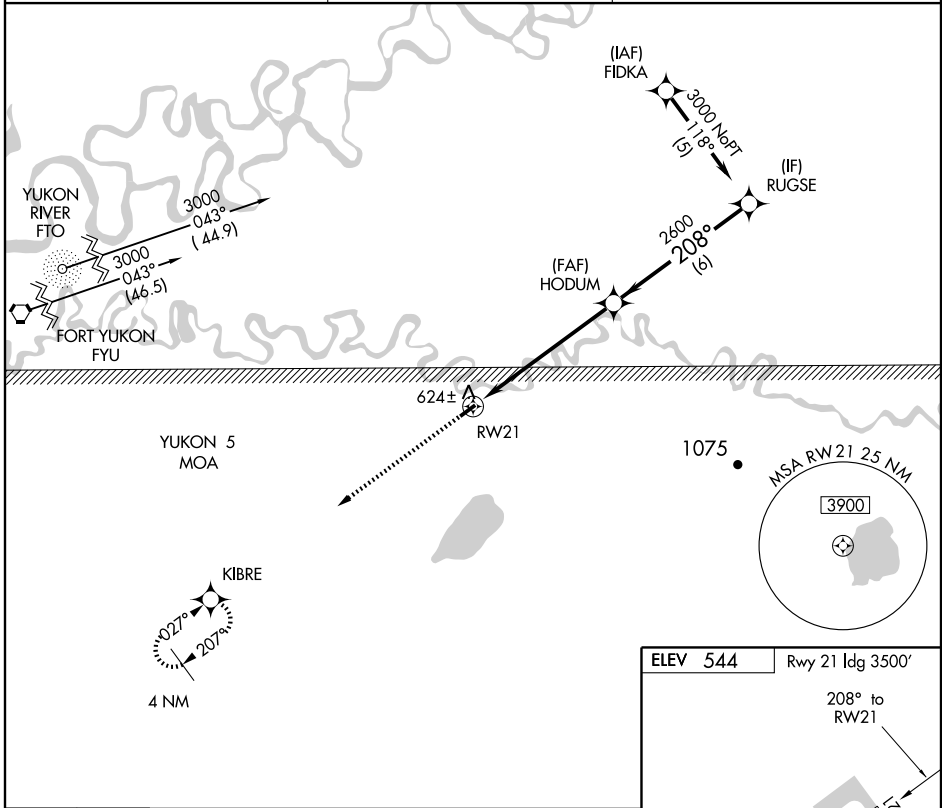
RNAV (GPS) RWY 21

CHALKYITSIK (CIK) (PACI)

APP CRS 208°	Rwy ldg TDZE Apt Elev	3500 541 544
------------------------	-----------------------------	---

<p>▽ DME/DME RNP-0.3 NA.</p> <p>▲ NA Use Fort Yukon altimeter setting.</p>	<p>MISSED APPROACH: Climb to 3000 direct KIBRE and hold.</p>
--	--

FORT YUKON AWOS-3 125.8	ANCHORAGE CENTER 135.0 225.4	CTAF 122.9
-----------------------------------	--	----------------------



AK, 22 OCT 2009 to 17 DEC 2009

AK, 22 OCT 2009 to 17 DEC 2009

