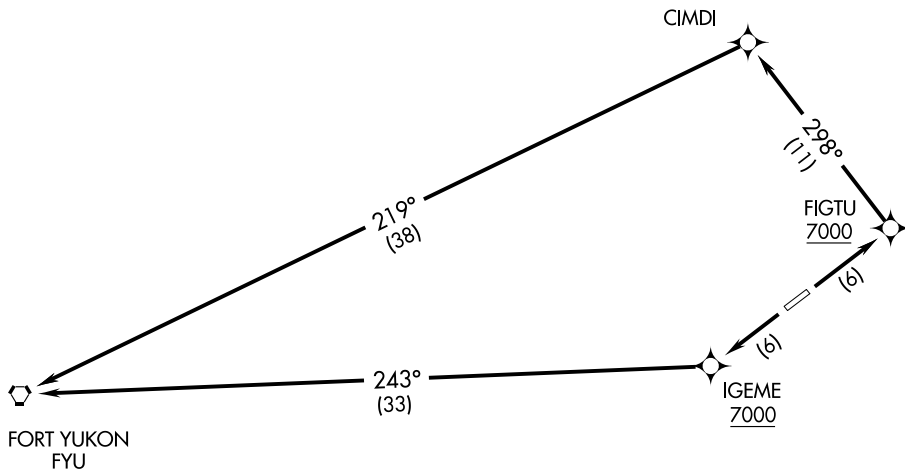


FORTU ONE DEPARTURE (RNAV)

ANCHORAGE CENTER
135.0 225.4
CTAF
122.9
FORT YUKON AWOS-3
125.8



TAKE-OFF MINIMUMS:
Rwy 3, 21: Standard.

TAKE-OFF OBSTACLES:

- Rwy 3: Tree 330' from DER, 355' left of centerline, 15' AGL/564' MSL.
Tree 1291' from DER, 191' right of centerline, 15' AGL/564' MSL.
- Rwy 21: Tree 237' from DER, 92' left of centerline, 15' AGL/564' MSL.
Tree 692' from DER, 346' left of centerline, 15' AGL/564' MSL.
Tree 909' from DER, 472' right of centerline, 15' AGL/564' MSL.

- NOTE:
1. GPS Required
 2. RNAV 1

NOTE: Chart not to scale.



DEPARTURE ROUTE DESCRIPTION

TAKE-OFF RUNWAY 3: Climb to 7000 or ATC assigned higher altitude direct FIGTU and via track 298° to CIMDI, and via track 219° to FYU VORTAC.

TAKE-OFF RUNWAY 21: Climb to 7000 or ATC assigned higher altitude direct IGEME and via track 243° to FORT YUKON VORTAC.