

# RNAV (GPS) RWY 19

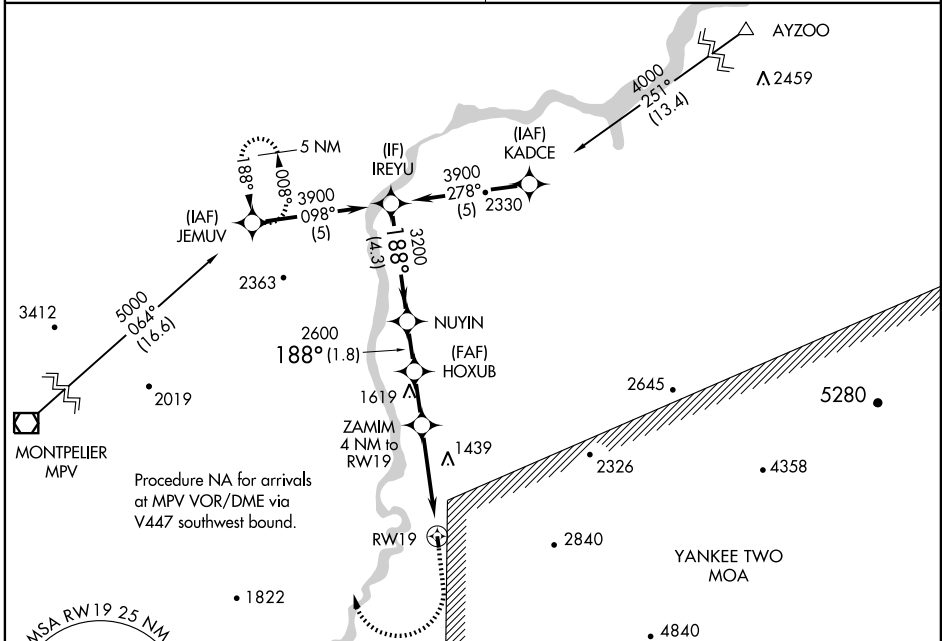
HAVERHILL/DEAN MEMORIAL (5B9)

APP CRS	Rwy Idg	<b>2511</b>
<b>188°</b>	TDZE	<b>582</b>
	Apt Elev	<b>582</b>

**NA** DME/DME RNP-0.3 NA. Procedure NA at night. Visibility reduction by helicopters NA. Use Lebanon altimeter setting; if not received, use Barre-Montpelier, VT altimeter setting and increase all MDAs 80 feet.

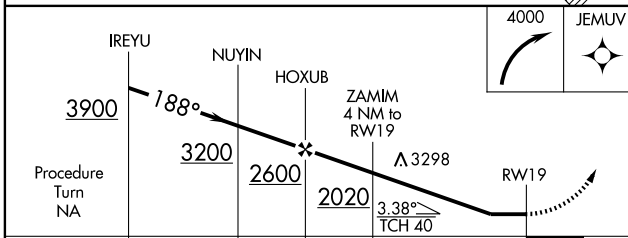
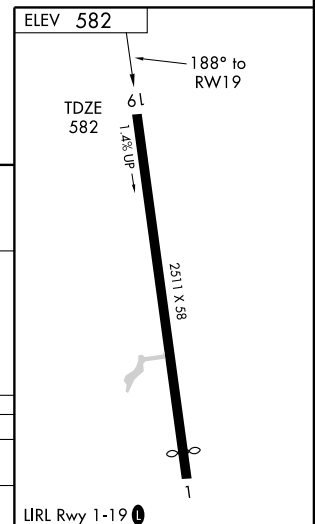
**MISSED APPROACH:** Climbing right turn to 4000 direct JEMUV and hold.

LEBANON ASOS <b>118.65</b>	UNICOM <b>122.8 (CTAF) 0</b>
-------------------------------	---------------------------------



NE-1, 22 OCT 2009 to 19 NOV 2009

NE-1, 22 OCT 2009 to 19 NOV 2009



CATEGORY	A	B	C	D
LNAV MDA	1780-1¼ 1198 (1200-1¼)	1780-1½ 1198 (1200-1½)	NA	NA
CIRCLING	1780-1¼ 1198 (1200-1¼)	2060-1½ 1478 (1500-1½)	NA	NA