

PAOLA, KANSAS

AL-10067 (FAA)

# RNAV (GPS) RWY 21

PAOLA/MIAMI COUNTY (K81)

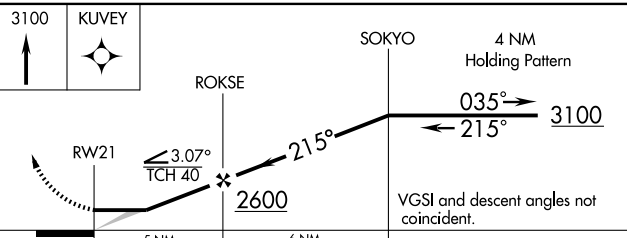
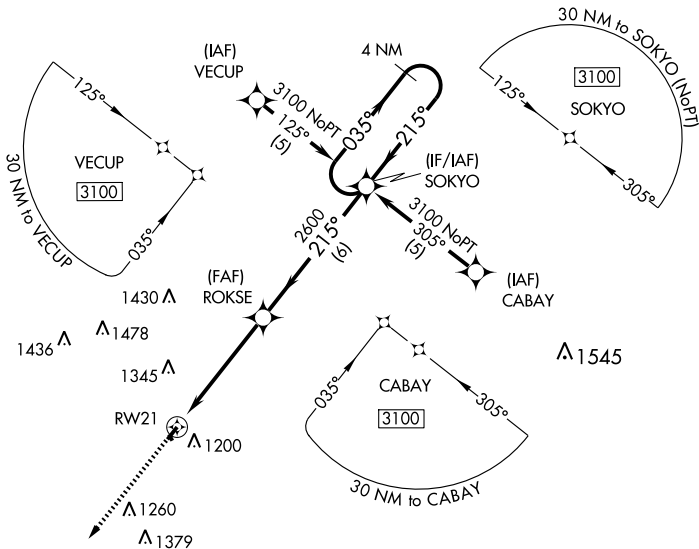
APP CRS <b>215°</b>	Rwy Idg <b>3400</b>
	TDZE <b>932</b>
	Apt Elev <b>940</b>

**NA** Use OLATHE/NEW CENTURY AIRCENTER altimeter setting.  
GPS or RNP -0.3 Required. DME/DME RNP -0.3 NA.  
Procedure NA at night.

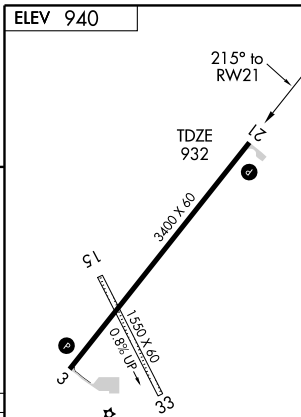
MISSED APPROACH: Climb to 3100 direct KUYEY WP and hold.

KANSAS CITY APP CON  
**118.9 294.7**

UNICOM  
**122.8 (CTAF)**



CATEGORY	A	B	C	D
LNAV MDA	1520-1	588 (600-1)	NA	
CIRCLING	1580-1	640 (700-1)	NA	



REIL Rwy 3-21 **1**  
MIRL Rwy 3-21 **1**

NC-2, 22 OCT 2009 to 19 NOV 2009

NC-2, 22 OCT 2009 to 19 NOV 2009

PAOLA, KANSAS  
Orig 08213

38°32'N-94°55'W

PAOLA/MIAMI COUNTY (K81)

# RNAV (GPS) RWY 21