

EEK, ALASKA

AL-10065 (FAA)

RNAV (GPS) RWY 17

EEK (EEK) (PAEE)

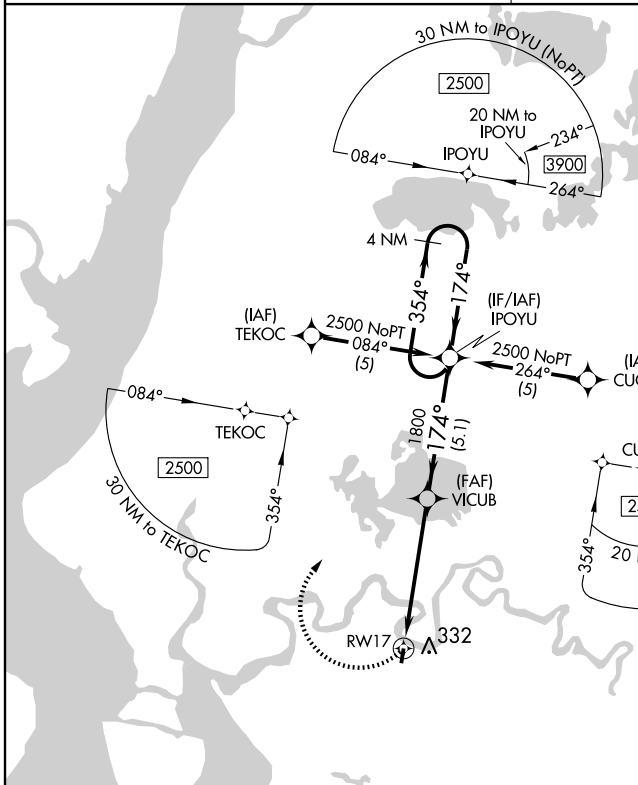
APP CRS	Rwy Idg	3243
174°	TDZE	12
	Apt Elev	12

▲ NA Use Bethel altimeter setting.
DME/DME RNP- 0.3 NA.

MISSED APPROACH: Climbing right turn to 2500 direct IPOYU and hold.

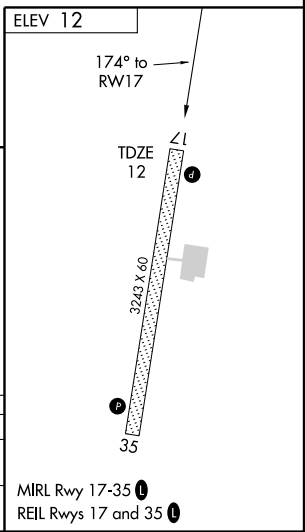
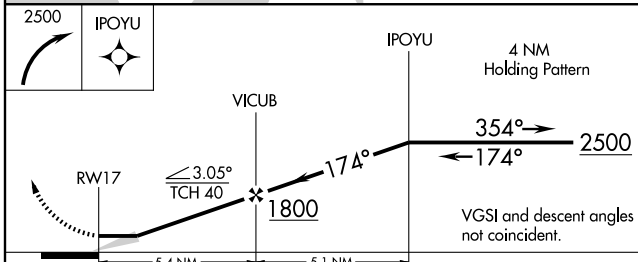
ANCHORAGE CENTER
125.2 372.0

CTAF
122.8 0



AK, 22 OCT 2009 to 17 DEC 2009

AK, 22 OCT 2009 to 17 DEC 2009



CATEGORY	A	B	C	D
LNVA MDA	620-1	608 (700-1)	NA	
CIRCLING	740-1	728 (800-1)	NA	

EEK, ALASKA
Orig-A 09239

60° 13' N - 162° 03' W

RNAV (GPS) RWY 17

MIRL Rwy 17-35 0
REIL Rwy 17 and 35 0