

RNAV (GPS) RWY 19

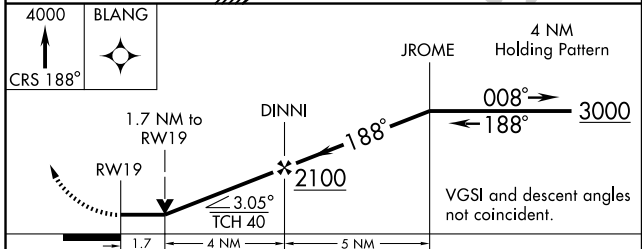
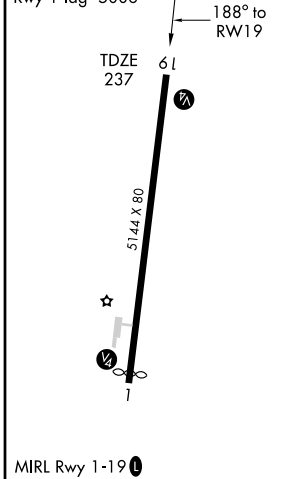
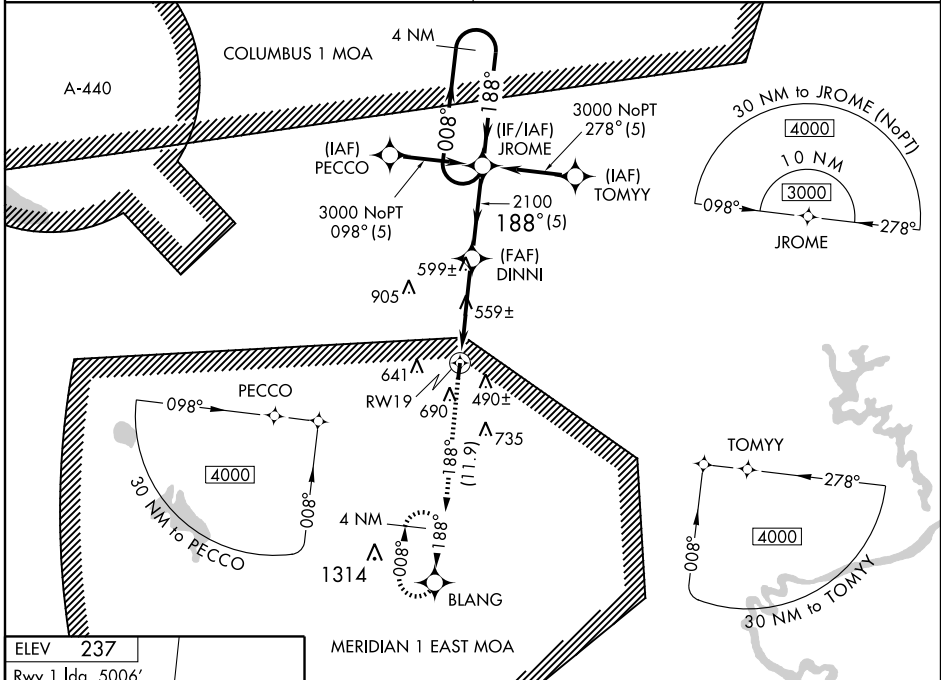
REFORM/NORTH PICKENS (3M8)

APP CRS	Rwy ldg	5144
188°	TDZE	237
	Apt Elev	237

NA Obtain local altimeter setting on CTAF. When not received, use Tuscaloosa altimeter setting.
 GPS or RNP-0.3 Required. DME/DME RNP-0.3 NA. VDP NA with Tuscaloosa altimeter setting.

MISSED APPROACH: Climb to 4000 via 188° course to BLANG WP and hold.

COLUMBUS APP CON ★ 135.6 323.275	CTAF 122.90
--	-----------------------



CATEGORY	A	B	C	D
LNAV MDA	820-1	583 (600-1)	820-1½	820-1¾
CIRCLING	1000-1 763 (800-1)	1000-1¼ 763 (800-1¼)	1000-2¼ 763 (800-2¼)	1000-2½ 763 (800-2½)
TUSCALOOSA ALTIMETER SETTING MINIMUMS				
LNAV MDA	880-1	643 (700-1)	880-1¾ 643 (700-1¾)	880-2 643 (700-2)
CIRCLING	1060-1 823 (900-1)	1060-1¼ 823 (900-1¼)	1060-2½ 823 (900-2½)	1060-2¾ 823 (900-2¾)

SE-4, 22 OCT 2009 to 19 NOV 2009

SE-4, 22 OCT 2009 to 19 NOV 2009