

RNAV (GPS) RWY 2

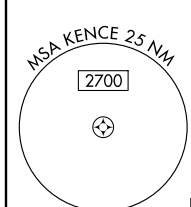
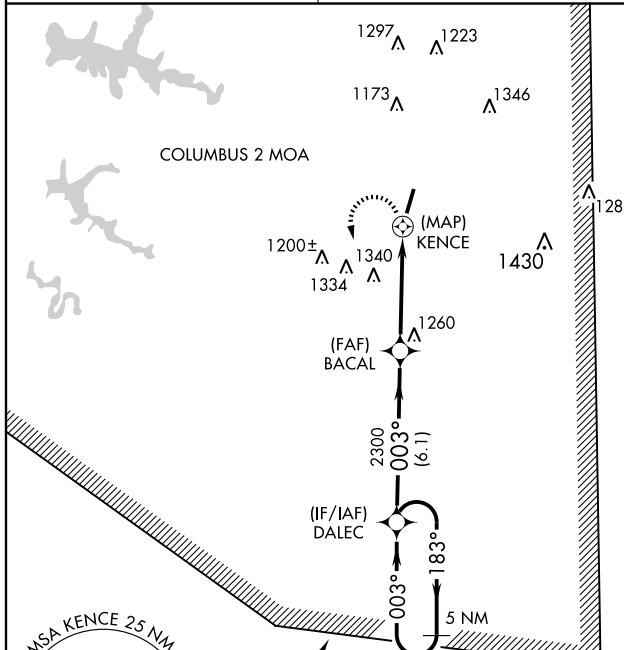
RUSSELLVILLE MUNI (M22)

APP CRS	Rwy Idg	5500
003°	TDZE	721
	Apt Elev	723

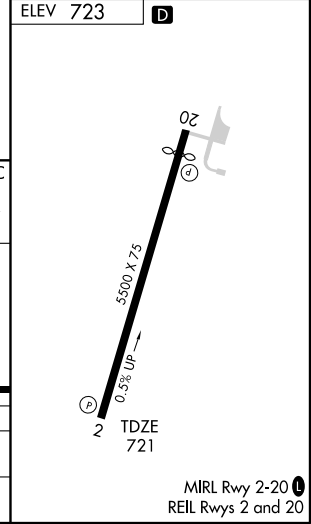
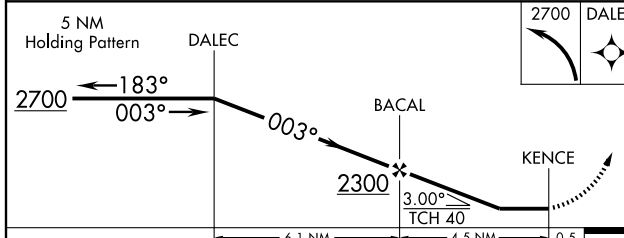
▼ Use Muscle Shoals altimeter setting; if not received, use Decatur altimeter setting and increase all MDAs 60 feet. Procedure NA at night.
▲ NA DME/DME RNP-0.3 NA. Visibility reduction by helicopters NA.

MISSED APPROACH: Climbing left turn to 2700 direct DALEC and hold.

MUSCLE SHOALS ASOS 119.425	MEMPHIS CENTER 120.8 307.0	UNICOM 122.8 (CTAF)
--------------------------------------	--------------------------------------	-------------------------------



ELEV 723	D
----------	----------



CATEGORY	A	B	C	D
RNAV MDA	1660-1¼ 939 (1000-1¼)		1660-2¾ 939 (1000-2¾)	1660-3 939 (1000-3)
CIRCLING	1660-1¼ 937 (1000-1¼)		1660-2¾ 937 (1000-2¾)	1660-3 937 (1000-3)

SE-4, 22 OCT 2009 to 19 NOV 2009

SE-4, 22 OCT 2009 to 19 NOV 2009