

TOK, ALASKA

AL-10059 (FAA)

# RNAV (GPS) RWY 7

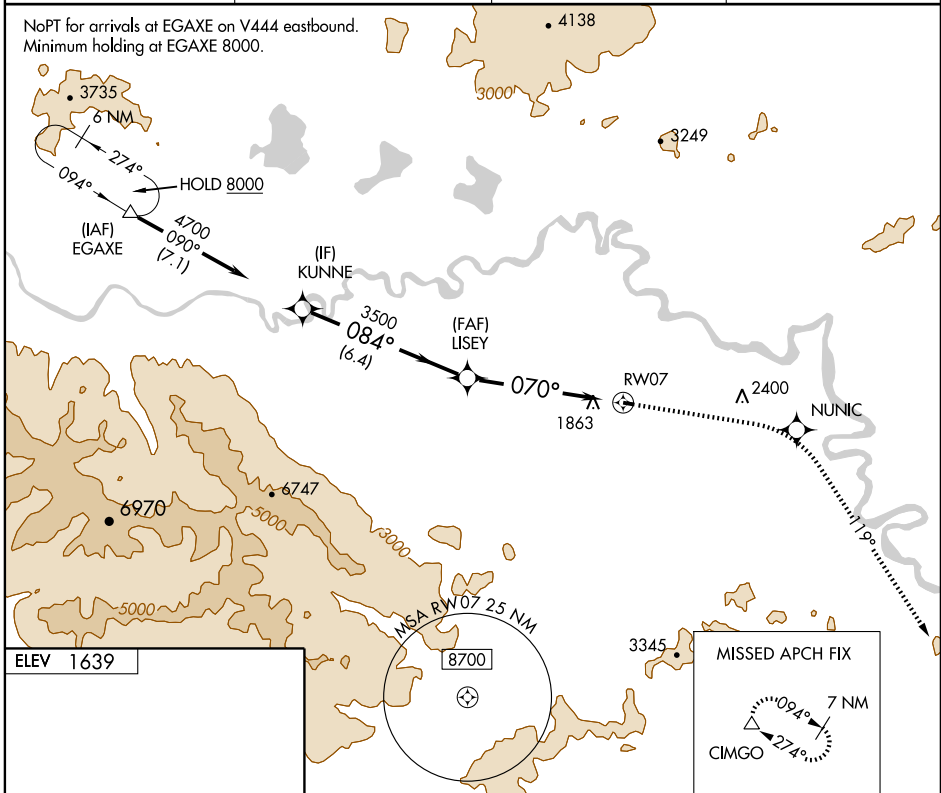
TOK JUNCTION (6K8) (PFTO)

APP CRS	Rwy Idg	<b>2509</b>
<b>070°</b>	TDZE	<b>1639</b>
	Apt Elev	<b>1639</b>

**▽** DME/DME RNP-0.3 NA.  
**▲** NA Use Northway altimeter setting.

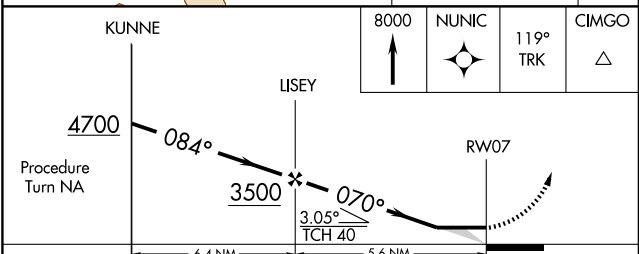
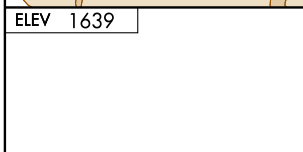
MISSED APPROACH: Climb to 8000 direct NUNIC and via 119° track to CIMGO and hold, continue climb-in-hold to 8000.

NORTHWAY ASOS <b>135.40</b>	ANCHORAGE CENTER <b>126.55 323.0</b>	NORTHWAY RADIO <b>122.4</b>	UNICOM <b>122.8</b> (CTAF) <b>0</b>
--------------------------------	---	--------------------------------	--



AK, 22 OCT 2009 to 17 DEC 2009

AK, 22 OCT 2009 to 17 DEC 2009



CATEGORY	A	B	C	D
LNAV MDA	2500-1 861 (900-1)	2500-1¼ 861 (900-1¼)	2500-2½ 861 (900-2½)	NA
CIRCLING	2540-1¼	901 (1000-1¼)	2540-2¾ 901 (1000-2¾)	NA

MIRL Rwy 7-25 **0**  
TOK, ALASKA  
Orig-A 09183

63°20'N - 142°57'W

# TOK JUNCTION (6K8) (PFTO)

## RNAV (GPS) RWY 7