

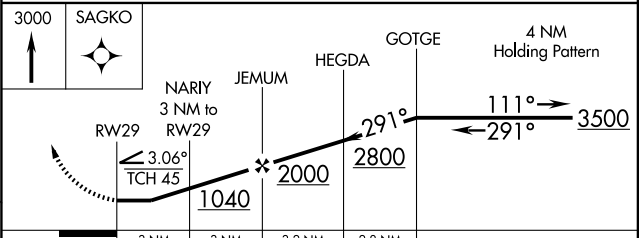
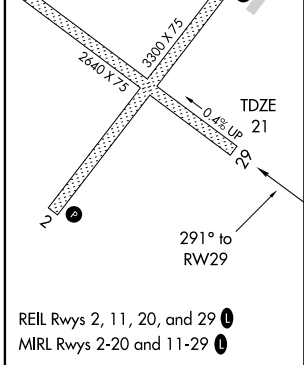
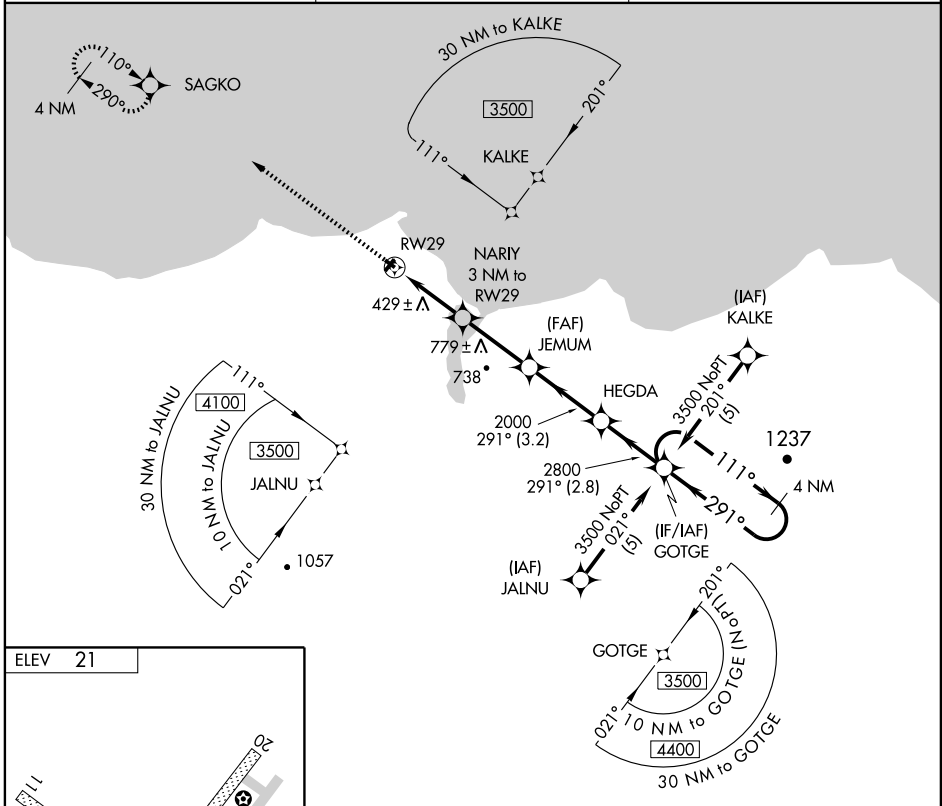
# RNAV (GPS) RWY 29

DEERING (DEE)(PADE)

APP CRS <b>291°</b>	Rwy Idg <b>2640</b>
	TDZE <b>21</b>
	Apt Elev <b>21</b>

	DME/DME RNP-0.3 NA.	MISSED APPROACH: Climb to 3000 direct SAGKO and hold.
--	---------------------	---

ASOS <b>135.5</b>	ANCHORAGE CENTER <b>119.2 263.0</b>	CTAF <b>122.9</b>
----------------------	--	----------------------



CATEGORY	A	B	C	D
LNAV MDA	680-1	659 (700-1)	680-1¾ 659 (700-1¾)	NA
CIRCLING	680-1 659 (700-1)	740-1 719 (800-1)	820-2¼ 799 (800-2¼)	NA

AK, 22 OCT 2009 to 17 DEC 2009

AK, 22 OCT 2009 to 17 DEC 2009