

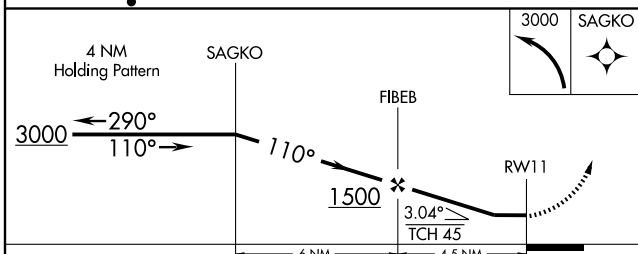
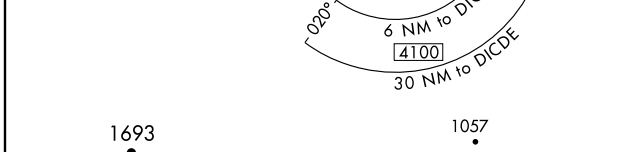
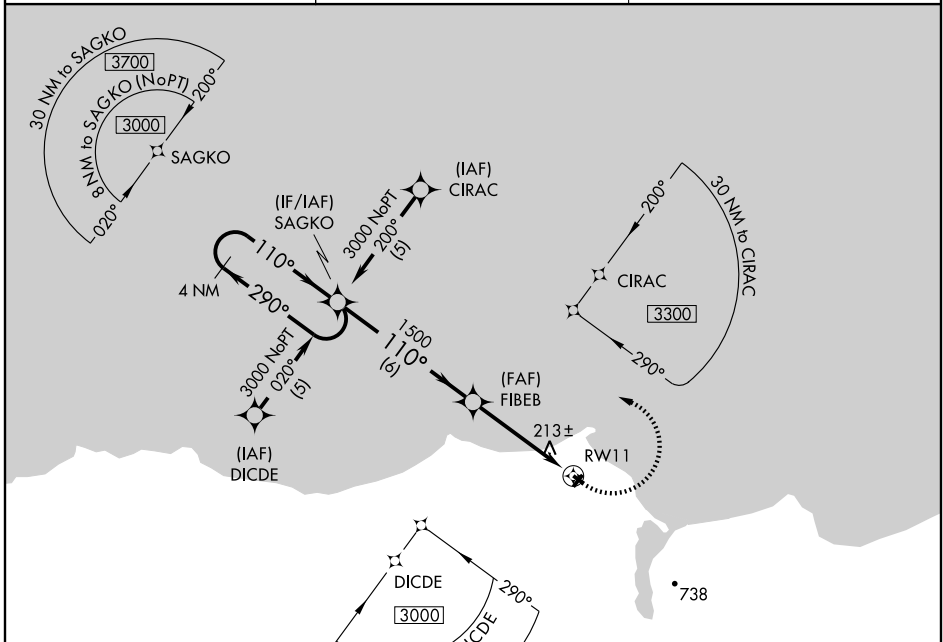
RNAV (GPS) RWY 11

DEERING (DEE)(PADE)

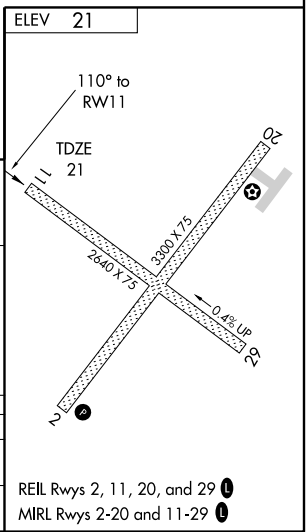
APP CRS 110°	Rwy Idg 2640 TDZE 21 Apt Elev 21
------------------------	---

<p>DME/DME RNP-0.3 NA.</p>	<p>MISSED APPROACH: Climbing left turn to 3000 direct SAGKO and hold.</p>
----------------------------	---

ASOS 135.5	ANCHORAGE CENTER 119.2 263.0	CTAF 122.9
----------------------	--	----------------------



CATEGORY	A	B	C	D
LNVA MDA	620-1	599 (600-1)	620-1½ 599 (600-1½)	NA
CIRCLING	680-1 659 (700-1)	740-1 719 (800-1)	820-2¼ 799 (800-2¼)	NA



REIL Rwy's 2, 11, 20, and 29

MIRL Rwy's 2-20 and 11-29

AK, 22 OCT 2009 to 17 DEC 2009

AK, 22 OCT 2009 to 17 DEC 2009