

(KOTZE1.OTZ) 09239

# KOTZE ONE DEPARTURE (RNAV) SL-10058 (FAA)

DEERING (DEE)(PADE)

DEERING, ALASKA

ANCHORAGE CENTER  
119.2 263.0  
CTAF 122.9

### TAKE-OFF OBSTACLES:

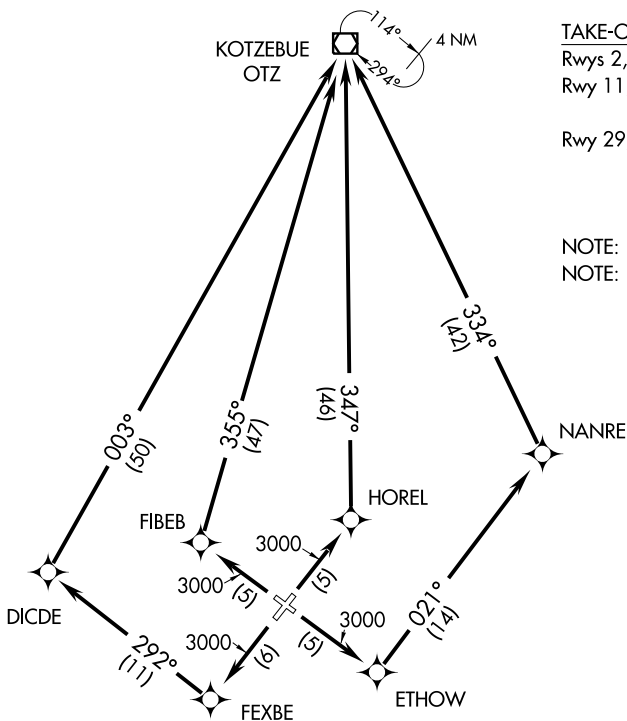
- Rwy 2, Tree 82' from DER, 6' right of centerline, 30' AGL/55' MSL, Trees beginning 803' from DER, left and right of centerline, up to 30' AGL/55' MSL.
- Rwy 11, Trees beginning 119' from DER, left and right of centerline, up to 30' AGL/55' MSL. Tree 4592' from DER, 796' left of centerline, 30' AGL/179' MSL. Trees beginning 5715' from DER, 110' left of centerline, up to 30' AGL/329' MSL. Trees beginning 1.3 NM from DER, 259' right of centerline, up to 30' AGL/429' MSL.
- Rwy 20, Trees beginning 151' from DER, left and right of centerline, up to 30' AGL/79' MSL.
- Rwy 29, Trees beginning 681' from DER, left and right of centerline, up to 30' AGL/104' MSL. Tree 3524' from DER, 1185' right of centerline, 30' AGL/154' MSL. Trees beginning 4721' from DER, 287' left of centerline, up to 30' AGL/179' MSL. Tree 1.0 NM from DER, 653' left of centerline, 30' AGL/213' MSL. Trees beginning 1.1 NM from DER, 872' right of centerline, up to 30' AGL/213' MSL.

### TAKE-OFF MINIMUMS:

- Rwys 2, 20: Standard.
- Rwy 11, Standard with a minimum climb of 360' per NM to 800.
- Rwy 29, 300-1½ or Standard with a minimum climb of 270' per NM to 300.

NOTE: GPS Required

NOTE: RNAV 1



NOTE: Chart not to scale.

### DEPARTURE ROUTE DESCRIPTION

- TAKE-OFF RWY 2: Climb to 3000 or ATC assigned higher altitude direct HOREL and via 347° track to OTZ VOR/DME.
- TAKE-OFF RWY 11: Climb to 3000 or ATC assigned higher altitude direct ETHOW and via 021° track to NANRE, and via 334° track to OTZ VOR/DME.
- TAKE-OFF RWY 20: Climb to 3000 or ATC assigned higher altitude direct FEXBE and right turn via 292° track TO DICDE, and via 003° track to OTZ VOR/DME.
- TAKE-OFF RWY 29: Climb to 3000 or ATC assigned higher altitude direct FIBEB and via 355° track to OTZ VOR/DME.

KOTZE ONE DEPARTURE (RNAV)

(KOTZE1.OTZ) 09239

DEERING, ALASKA

DEERING (DEE)(PADE)

AK, 22 OCT 2009 to 17 DEC 2009

AK, 22 OCT 2009 to 17 DEC 2009