

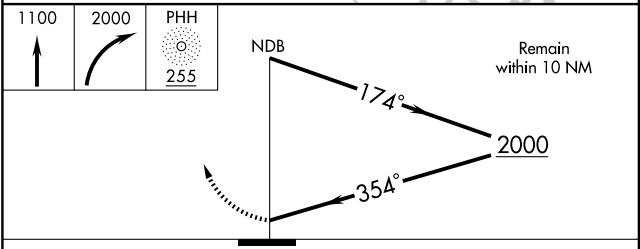
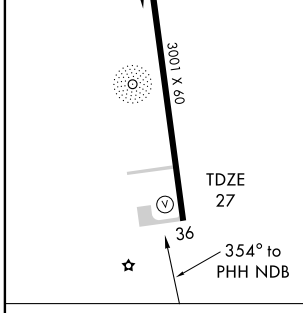
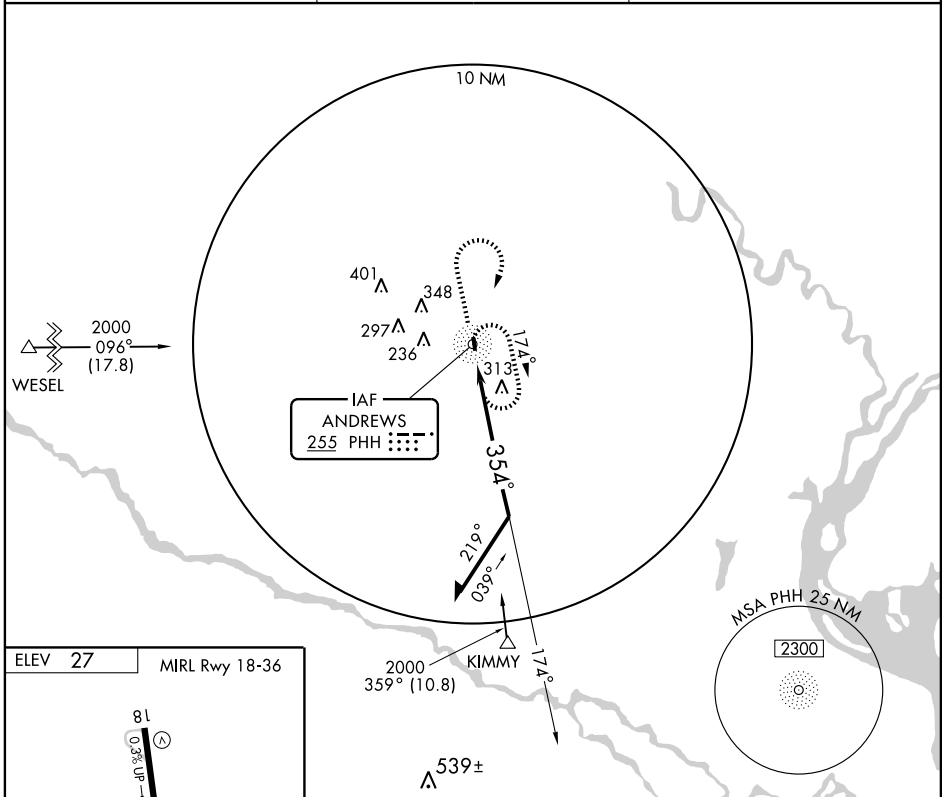
# NDB RWY 36

ANDREWS/ROBERT F. SWINNIE (PHH)

NDB PHH	APP CRS	Rwy ldg	<b>3001</b>
<b>255</b>	<b>354°</b>	TDZE	<b>27</b>
		Apt Elev	<b>27</b>

<p><b>▼</b> NA Use Myrtle Beach altimeter setting.</p>	<p>MISSED APPROACH: Climbing to 1100 then climbing right turn to 2000 direct to PHH NDB and hold</p>
--	--

MYRTLE BEACH AWOS-3 <b>124.5</b>	MYRTLE BEACH APP CON <b>127.4 257.95</b>	CTAF <b>122.9</b>
-------------------------------------	---	----------------------



ELEV	27	MRL Rwy 18-36				
Knots	60	90	120	150	180	
Min:Sec						

CATEGORY	A	B	C	D
S-36	740-1	713 (800-1)	740-2 713 (800-2)	NA
CIRCLING	740-1	713 (800-1)	740-2 713 (800-2)	NA

# NDB RWY 36

SE-2, 22 OCT 2009 to 19 NOV 2009

SE-2, 22 OCT 2009 to 19 NOV 2009