

# RNAV (GPS) Z RWY 25

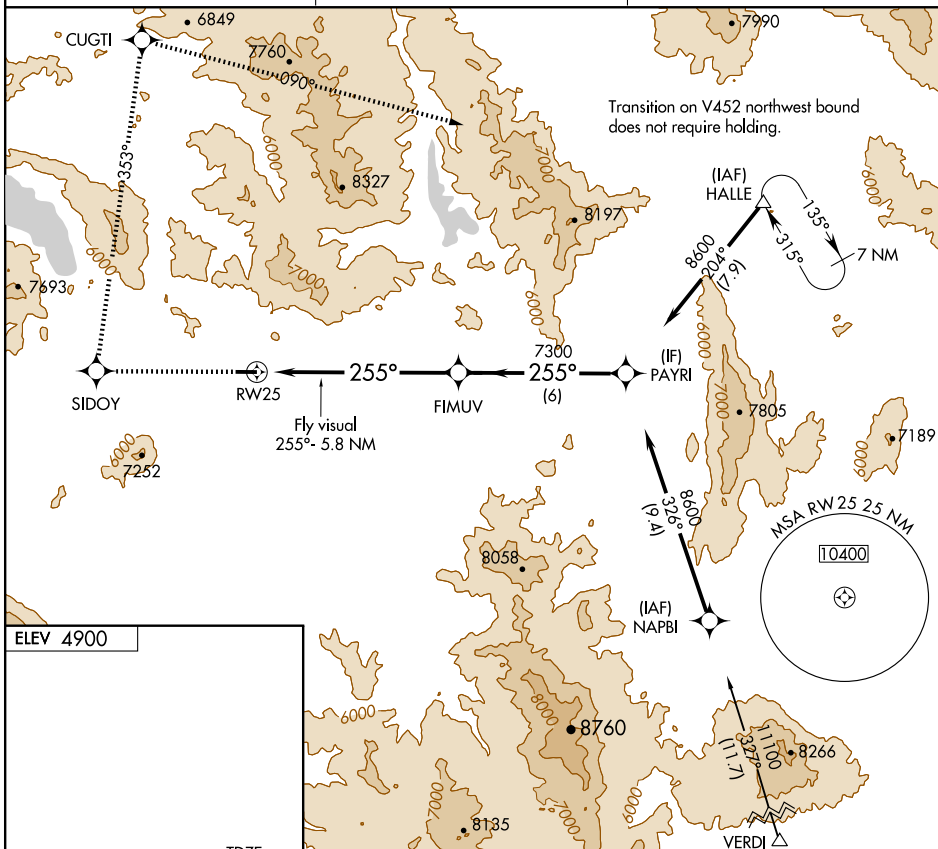
BECKWORTH/NERVINO (002)

WAAS CH <b>49203</b> W25A	APP CRS <b>255°</b>	Rwy Idg <b>4651</b> TDZE <b>4896</b> Apt Elev <b>4900</b>
---------------------------------	------------------------	---

- V** Use Reno/Stead altimeter setting; if not received, use Reno/Tahoe Intl altimeter setting and increase DA 166 feet.
- NA** DME/DME RNP -0.3 NA.
- W** Visibility reduction by helicopters NA.

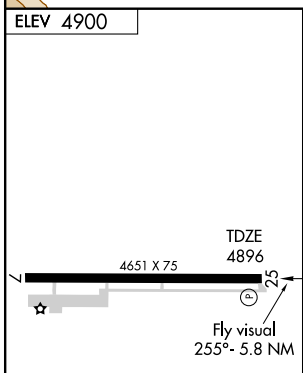
**MISSED APPROACH:** Climb to 10000 direct SIDOY and right turn via 353° track to CUGTI, and right turn 090° track to HALLE and hold.

RENO/STEAD AWOS-3 <b>135.175</b>	RENO APP CON <b>126.3</b>	UNICOM <b>122.8 (CTAF)</b>
-------------------------------------	------------------------------	-------------------------------



SW-2, 22 OCT 2009 to 19 NOV 2009

SW-2, 22 OCT 2009 to 19 NOV 2009



10000	SIDOY	CUGTI	HALLE	VGSI and RNAV glidepath not coincident
↑	◆	◆	△	
	353° track	090° track		
	Fly visual 255° - 5.8 NM	FIMUV	8600	Procedure Turn NA
	RW25	7300	255°	GS 3.00° TCH 55
	7.2 NM	6 NM		
CATEGORY	A	B	C	D
LPV DA	6787-2	1891 (1900-2)	6787-3	1891 (1900-3)