

RNAV (GPS) RWY 5

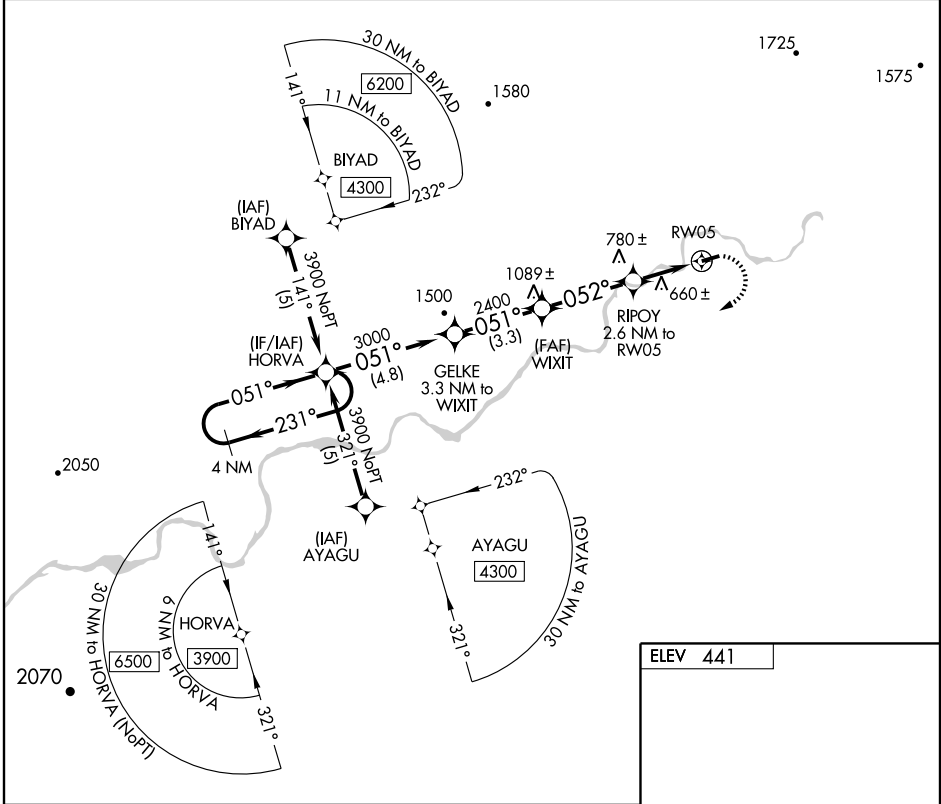
ALLAKAKET (6A8) (PFAL)

APP CRS 052°	Rwy Idg 4000
	TDZE 439
	Apt Elev 441

▼ Use Betles altimeter setting. DME/DME RNP-0.3 NA.
▲ NA

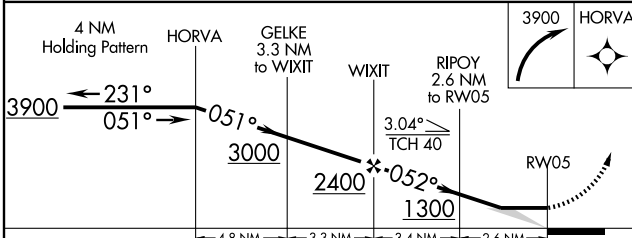
MISSED APPROACH: Climbing right turn to 3900 direct HORVA and hold.

BETTLES ASOS 135.450	ANCHORAGE CENTER 124.6 352.0	FAIRBANKS RADIO 122.2	CTAF 122.9 0
--------------------------------	--	---------------------------------	------------------------



AK, 22 OCT 2009 to 17 DEC 2009

AK, 22 OCT 2009 to 17 DEC 2009



ELEV 441

TDZE 439
4000 X 100
052° to RW05

MIRL Rwy 5-23 0

CATEGORY	A	B	C	D
LNVA MDA	1020-1	581 (600-1)	1020-1½ 581 (600-1½)	NA
CIRCLING	1100-1 659 (700-1)	1160-1 719 (800-1)	1200-2¼ 759 (800-2¼)	NA