

(BUUDN1.BUUDN) 09239

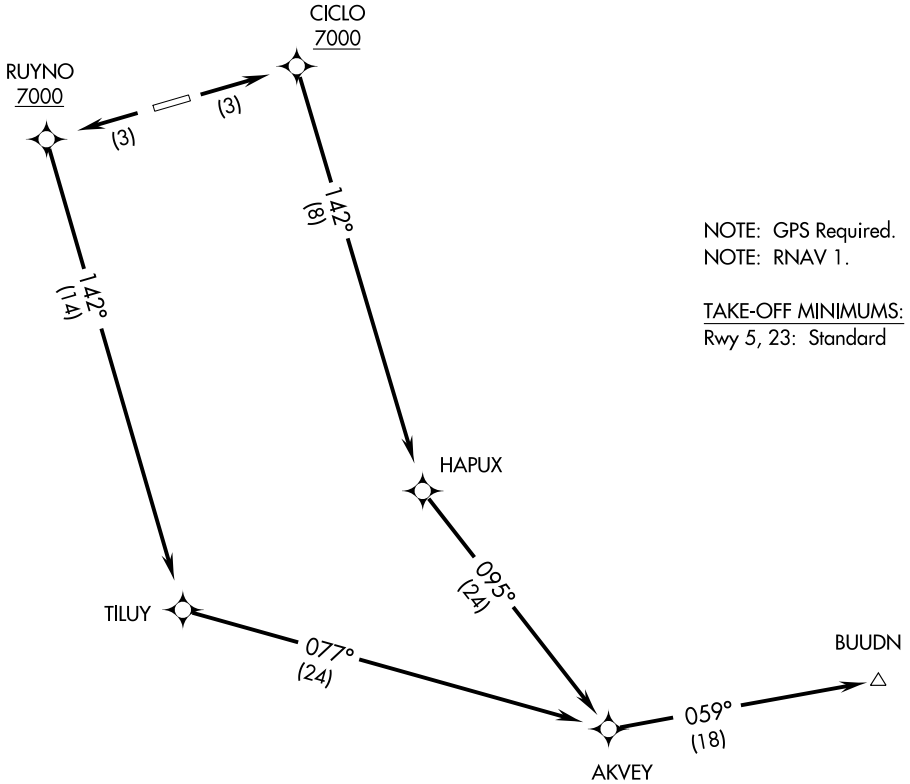
SL-9982 (FAA)

ALLAKAKET (6A8)(PFAL)

BUUDN ONE DEPARTURE (RNAV)

ALLAKAKET, ALASKA

CTAF 122.9
FAIRBANKS RADIO
122.2
ANCHORAGE CENTER
124.6 352.0



NOTE: GPS Required.
NOTE: RNAV 1.

TAKE-OFF MINIMUMS:
Rwy 5, 23: Standard

AK, 22 OCT 2009 to 17 DEC 2009

AK, 22 OCT 2009 to 17 DEC 2009

TAKE-OFF OBSTACLES NOTES:

Rwy 5: Tree 799' from DER, 606' right of centerline 40' AGL/532' MSL.
Tree 1297' from DER 664' right of centerline 40' AGL/534' MSL.
Tree 2007' from DER 342' right of centerline 40' AGL/498' MSL.

NOTE: Chart not to scale.



DEPARTURE ROUTE DESCRIPTION

TAKE-OFF RWY 5: Climb to 7000 direct CICLO and right turn via 142° track to HAPUX and via 095° track to AKVEY and via 059° track to BUUDN.

TAKE-OFF RWY 23: Climb to 7000 direct RUYNO and left turn via 142° track to TILUY and via 077° track to AKVEY and via 059° track to BUUDN.

BUUDN ONE DEPARTURE (RNAV)

(BUUDN1.BUUDN) 09239

ALLAKAKET, ALASKA
ALLAKAKET (6A8)(PFAL)