

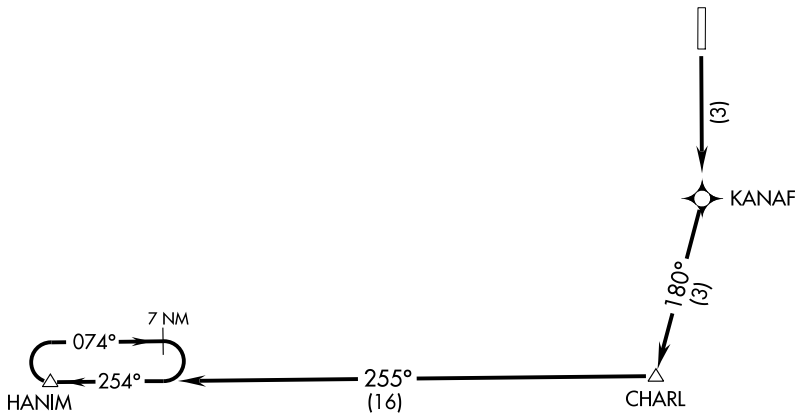
(HANIM1.HANIM) 09295

HANIM ONE DEPARTURE (RNAV)

SL-9978 (FAA)

RONAN (7S0)
RONAN, MONTANA

SALT LAKE CITY CENTER
133.4 285.4
GREAT FALLS RADIO
122.6
CTAF 122.8



NOTE: RNAV 1.

NOTE: GPS required.

TAKE-OFF MINIMUMS:

Rwy 16: Standard.

Rwy 34: NA. See RONAN DEPARTURE.

TAKE-OFF OBSTACLE NOTE:

Rwy 16: Tree 485' from DER, 386' left of centerline, 50' AGL/3149' MSL.

NOTE: Chart not to scale



DEPARTURE ROUTE DESCRIPTION

TAKE-OFF RUNWAY 16: Climb to 13000 direct KANAF and via track 180° to CHARL and via track 255° to HANIM and hold, continue climb-in-hold to 13000 before proceeding on course.

HANIM ONE DEPARTURE (RNAV)

(HANIM1.HANIM) 09295

RONAN, MONTANA
RONAN (7S0)

NW-1, 22 OCT 2009 to 19 NOV 2009

NW-1, 22 OCT 2009 to 19 NOV 2009